



Configuration Manual For SCADA

▶ *WinCC 6.2*

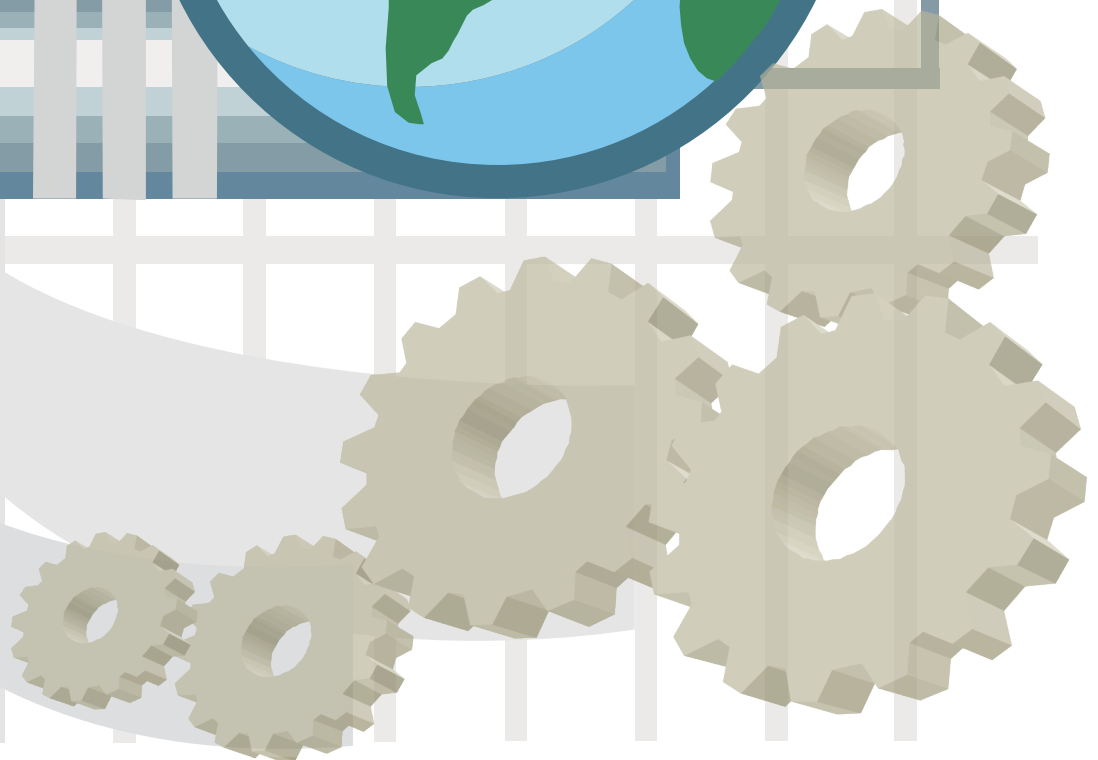


Table of Contents

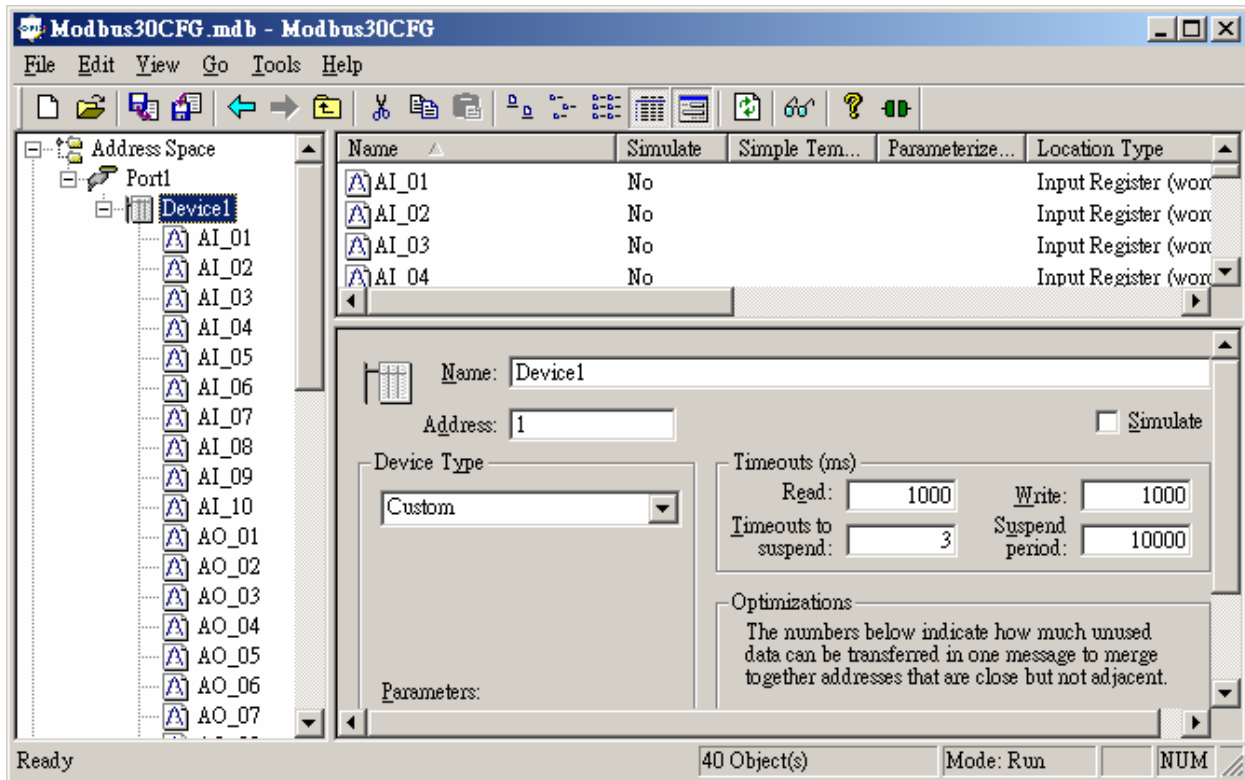
Chapter 1 WinCC 6.2	3
1-1 Set up OPC Server.....	4
1-2 Connect OPC Client to OPC Server through WinCC 6.2.....	5

Chapter 1

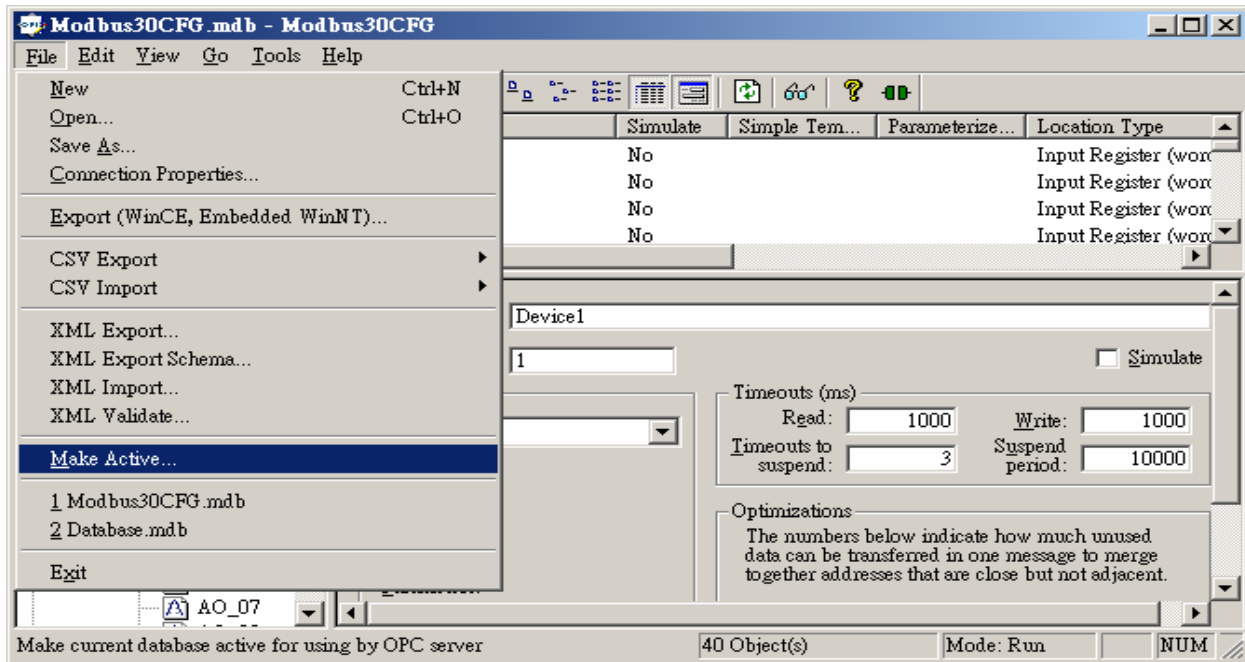
WinCC 6.2

1-1 Set up OPC Server

Please create tags according to the Configuration Manual.

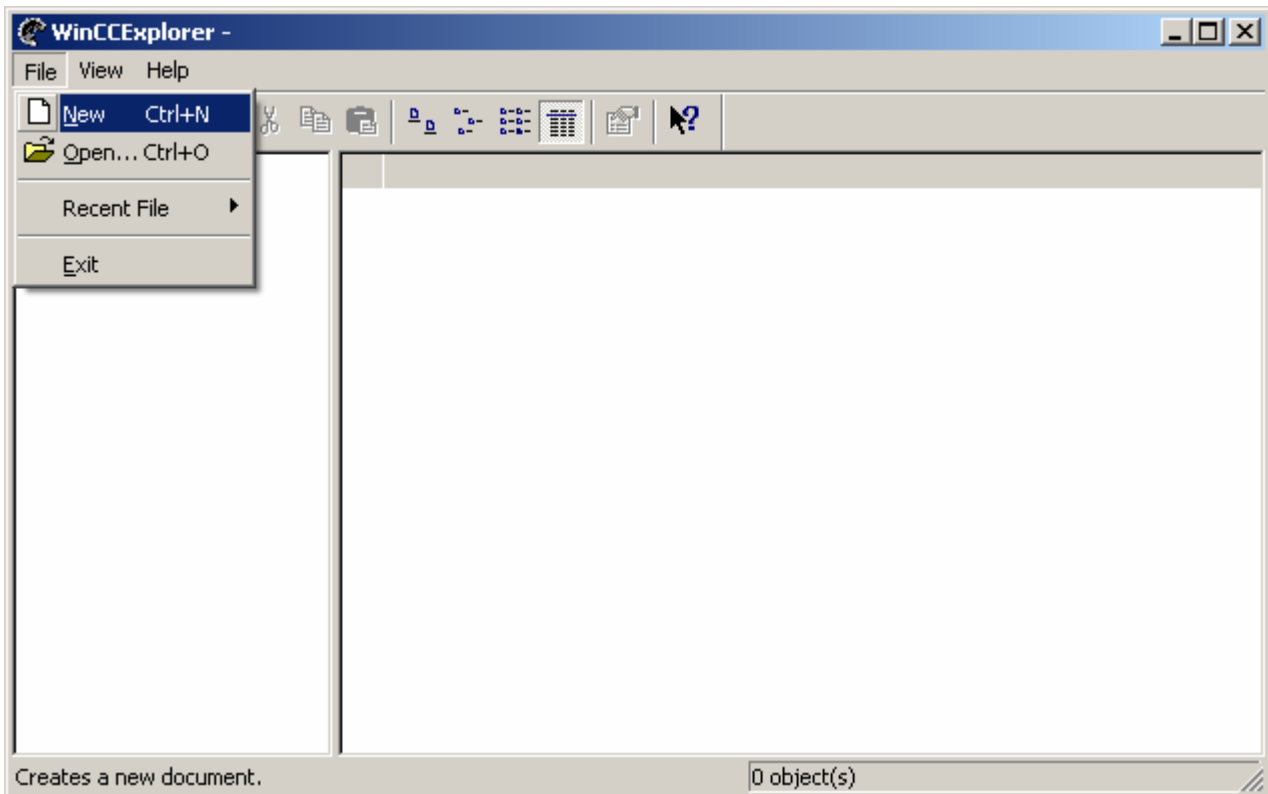


Later, click [File] → [Make Active] to activate new created configuration file.

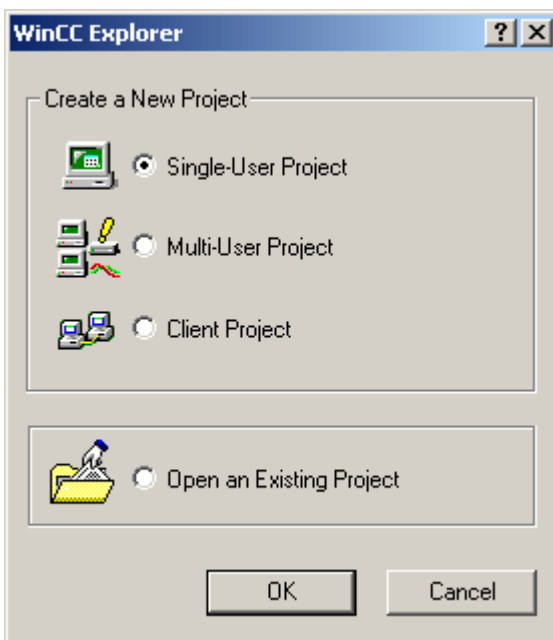


1-2 Connect OPC Client to OPC Server through WinCC 6.2

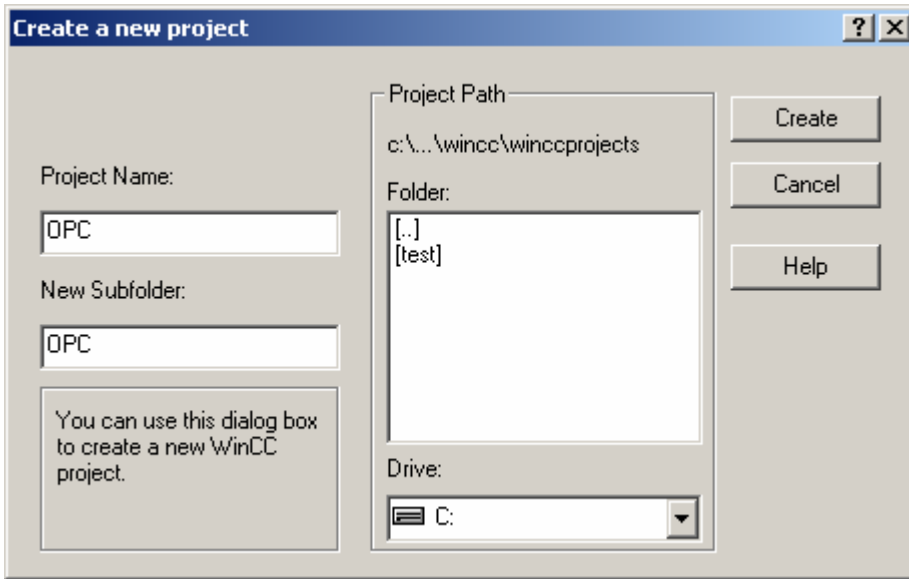
Start SIMATIC WinCC Explorer; then click [File] → [New]



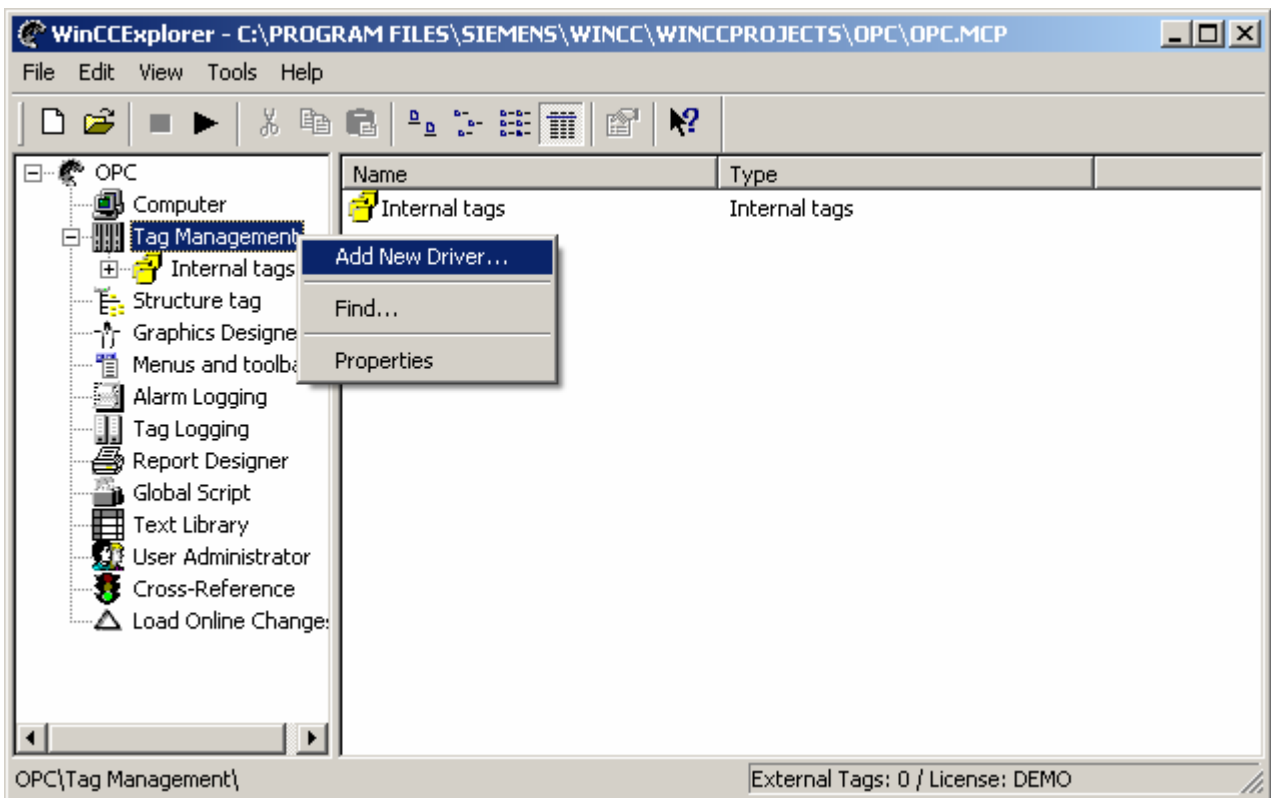
Select [Single-User Project] and then choose [OK].



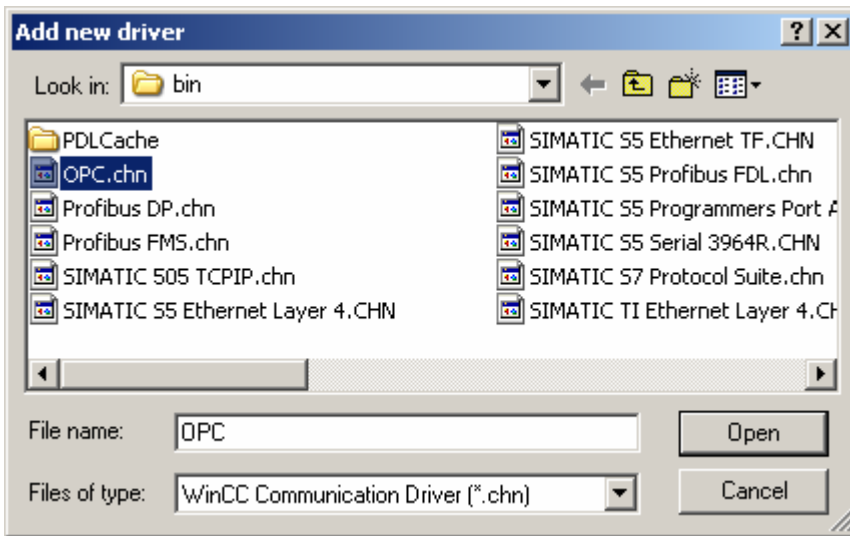
Write down the project name; then click [Create].



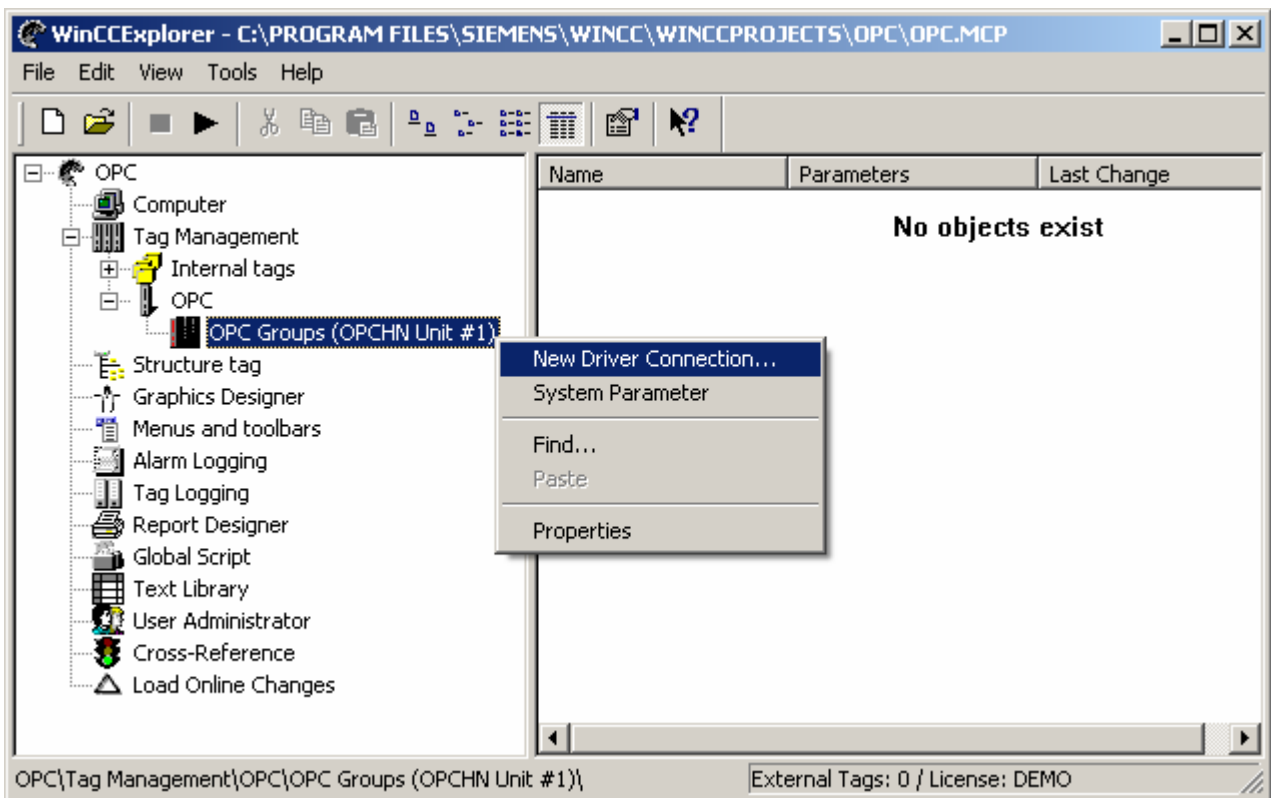
Press the right key on [Tag Management] choosing [Add New Driver...].



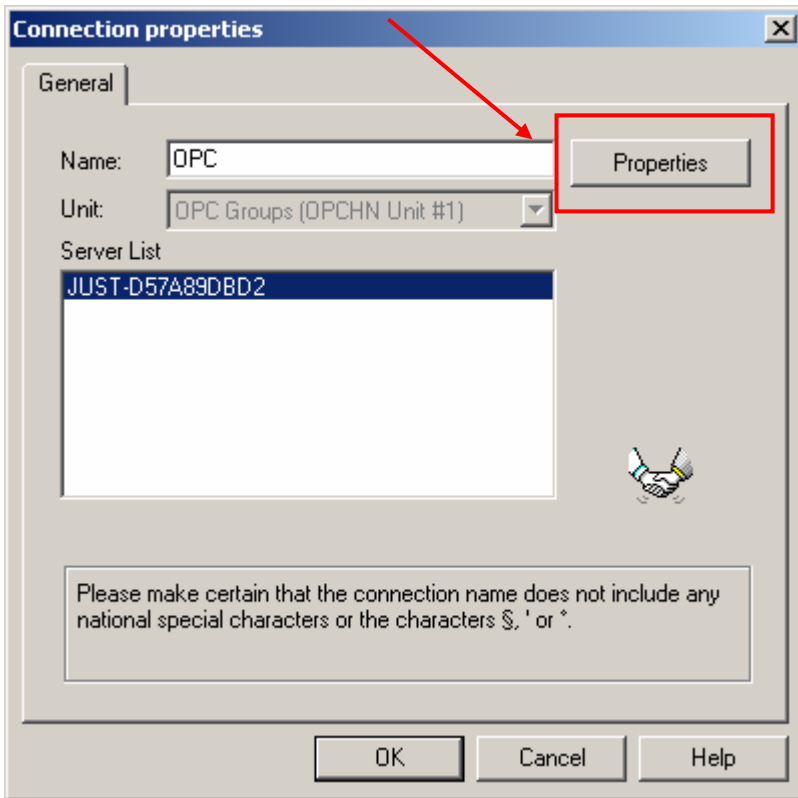
Select "OPC.chn"



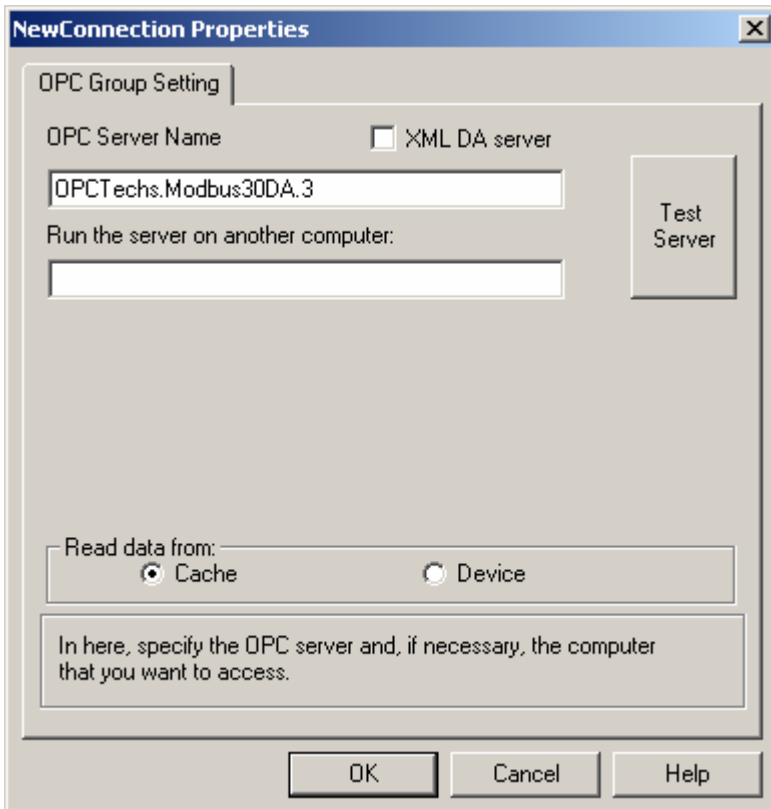
Press the right key on [OPC Groups] selecting [New Driver Connection...].



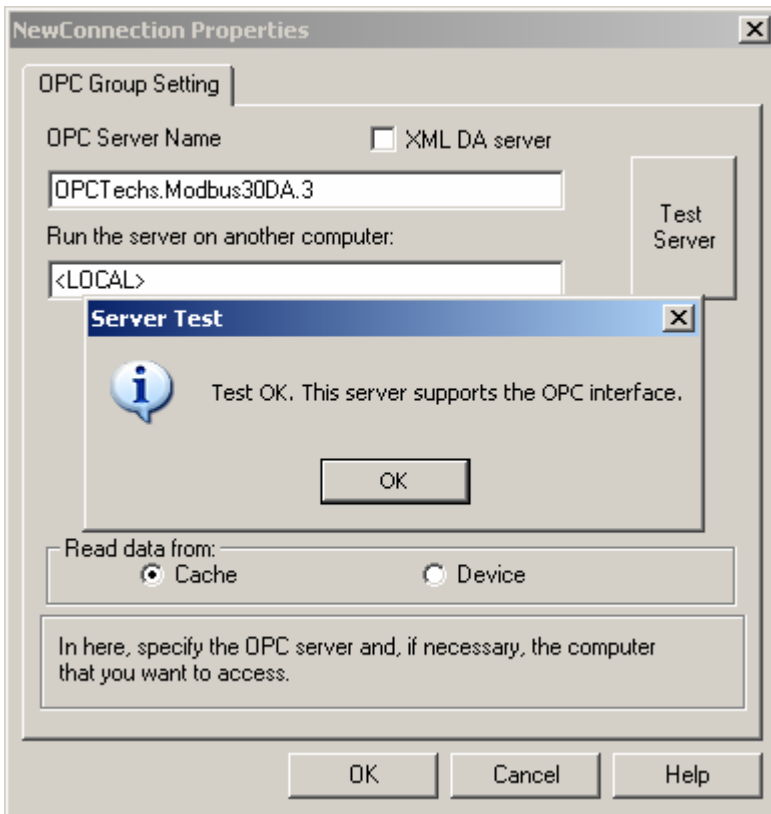
Define the name, and click the [Properties].



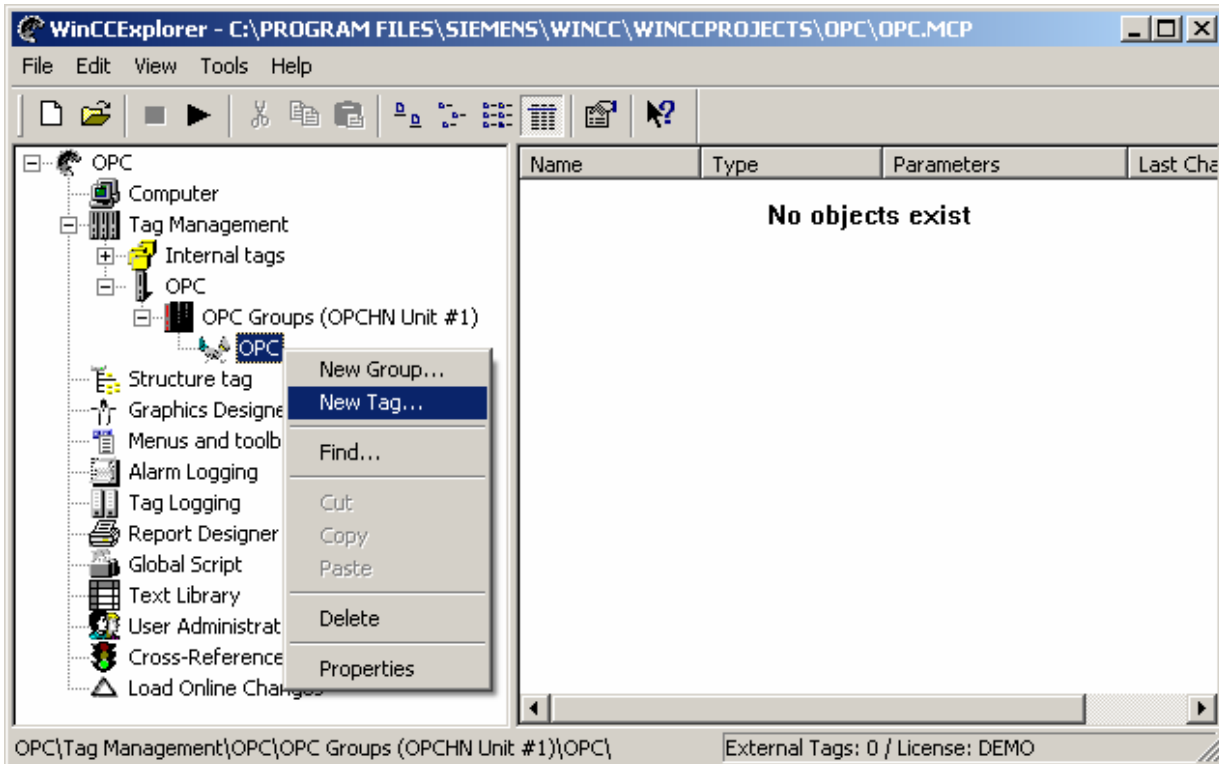
Write down the OPC Server to be connected; then click [Test Server].



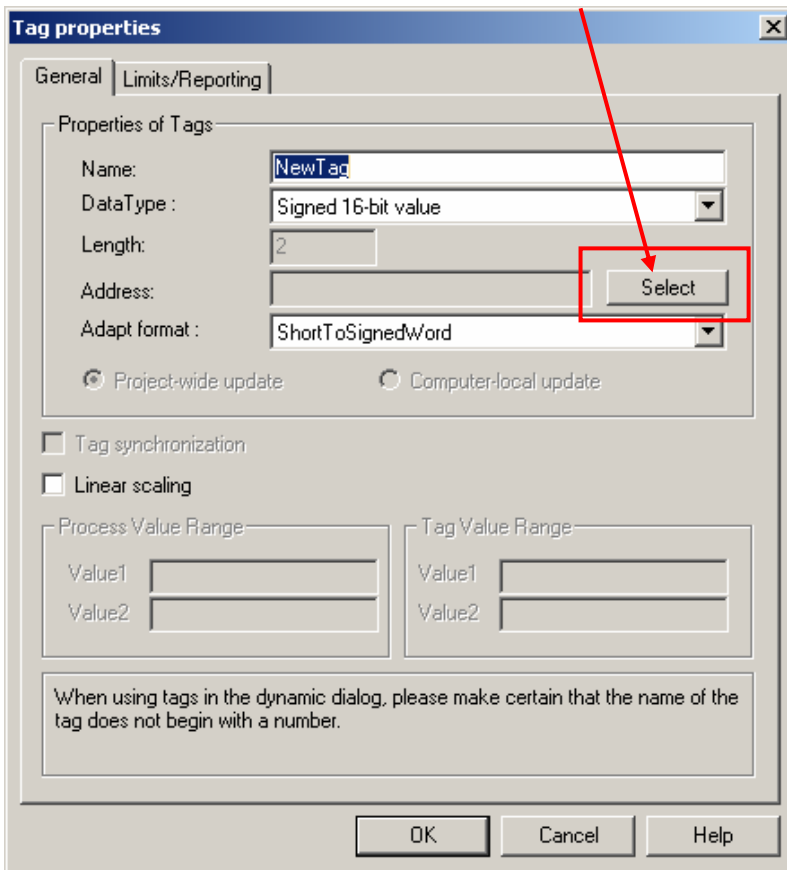
Under normal connection



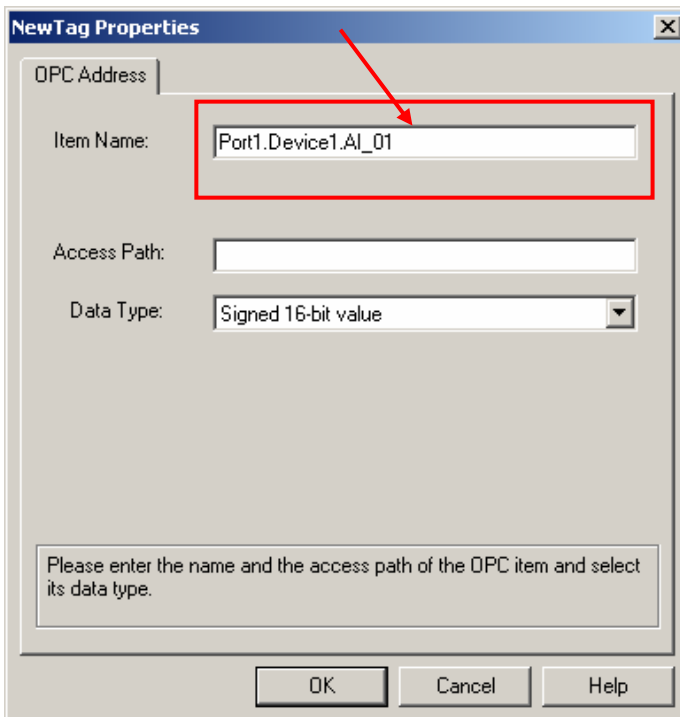
Press the right key on OPC selecting [New Tag].



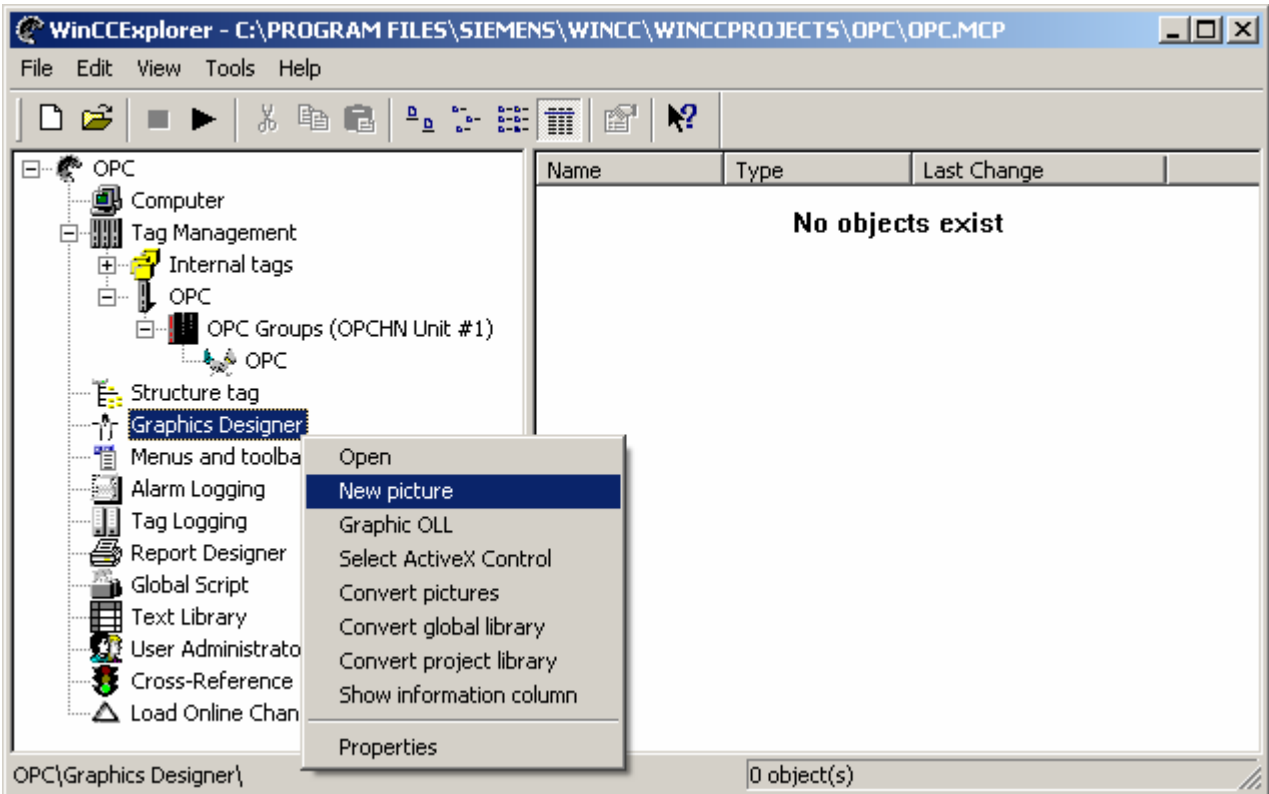
Define the tag name and click [Select] to define the path.



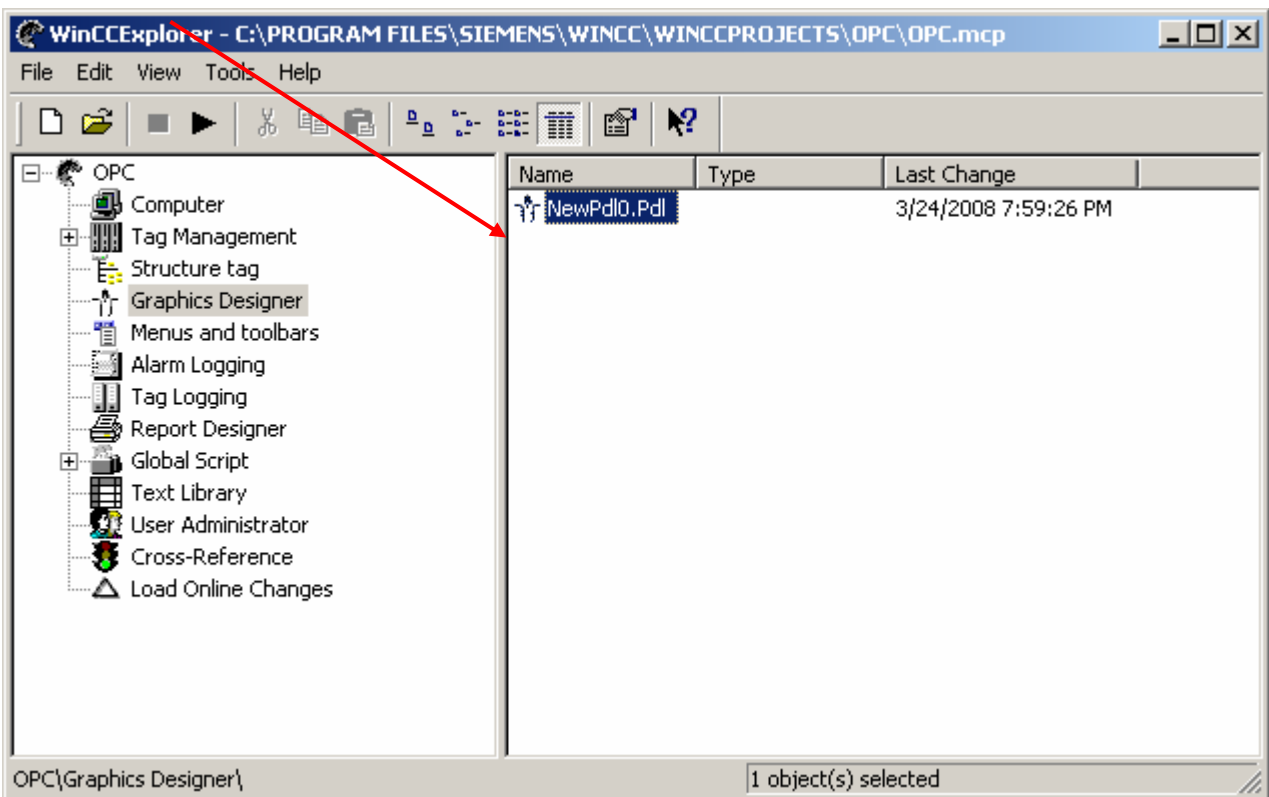
Click [OK] after the path is confirmed.



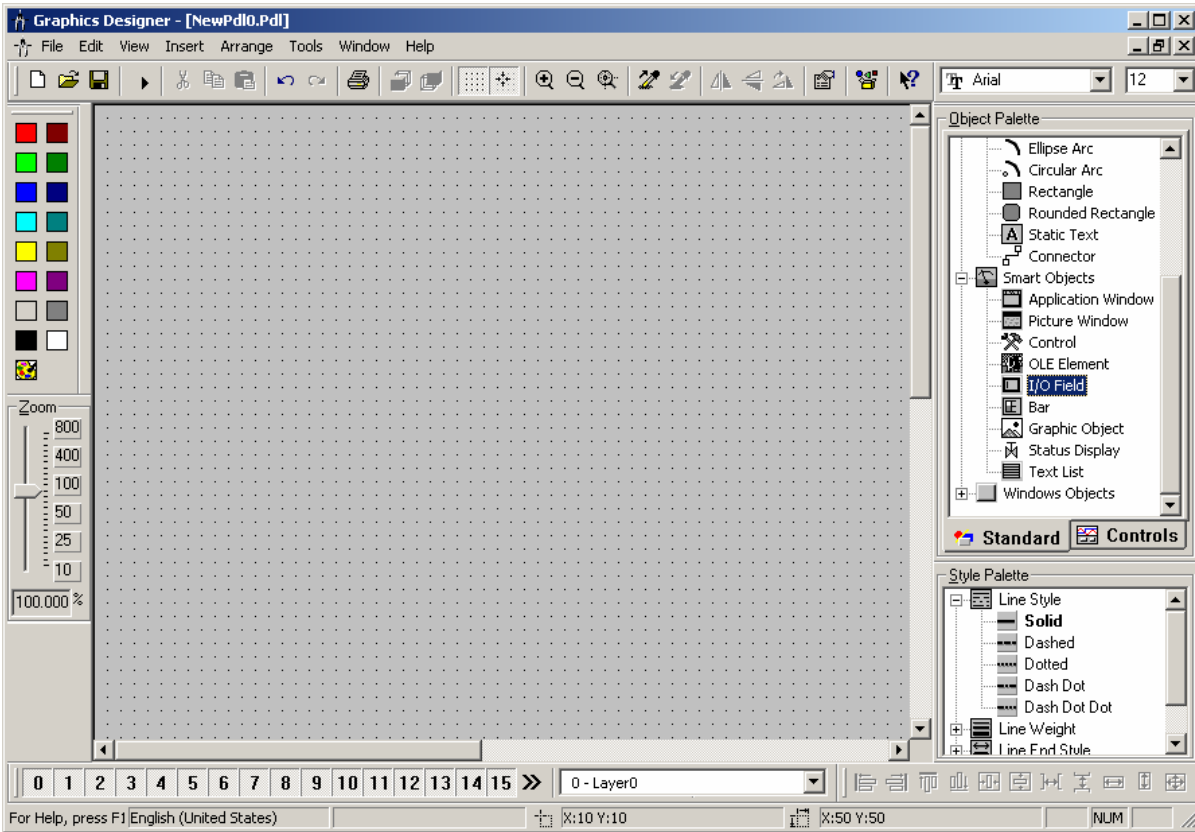
Create new picture and add in the tag.



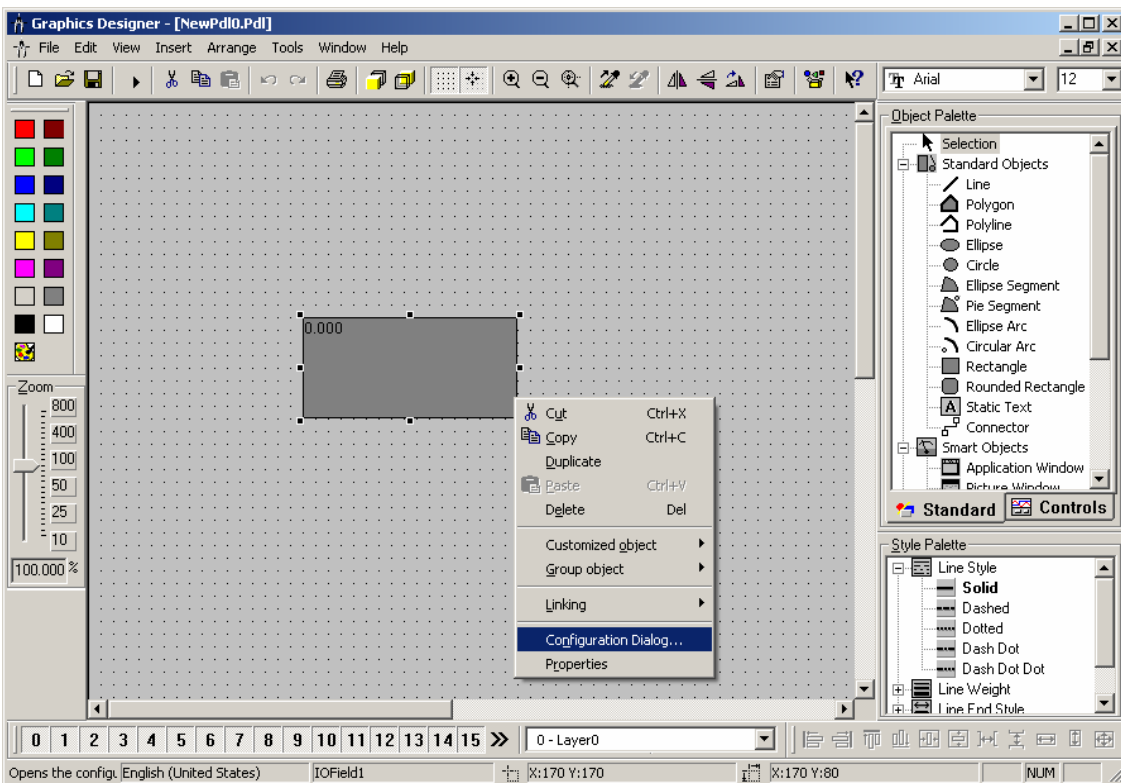
Open the item.



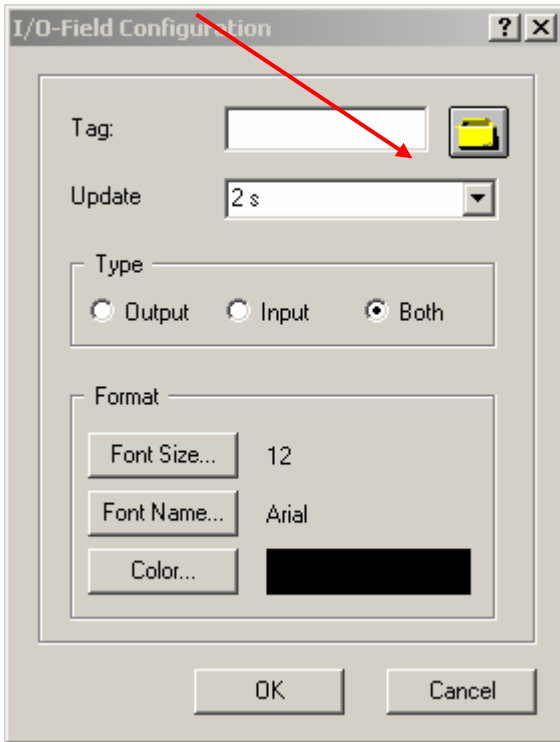
Choose [I/O Field].



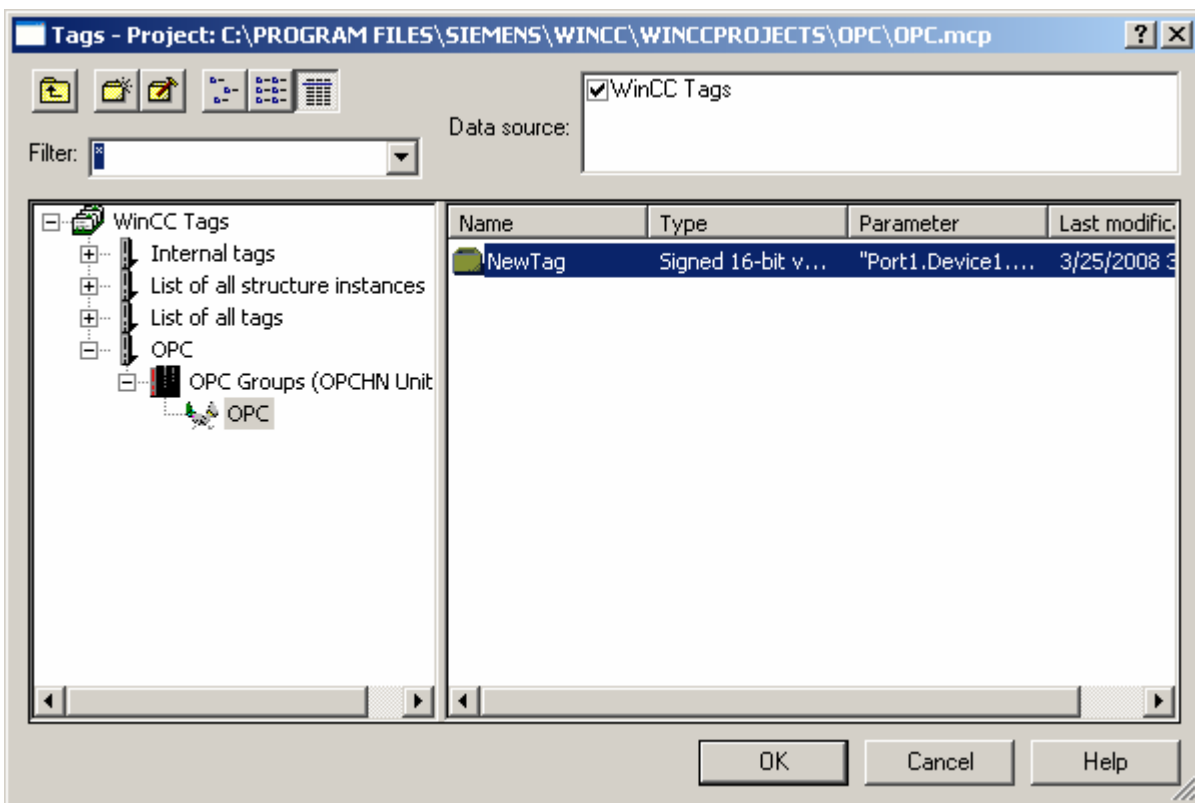
Press the right key on the icon and select [Configuration Dialog].



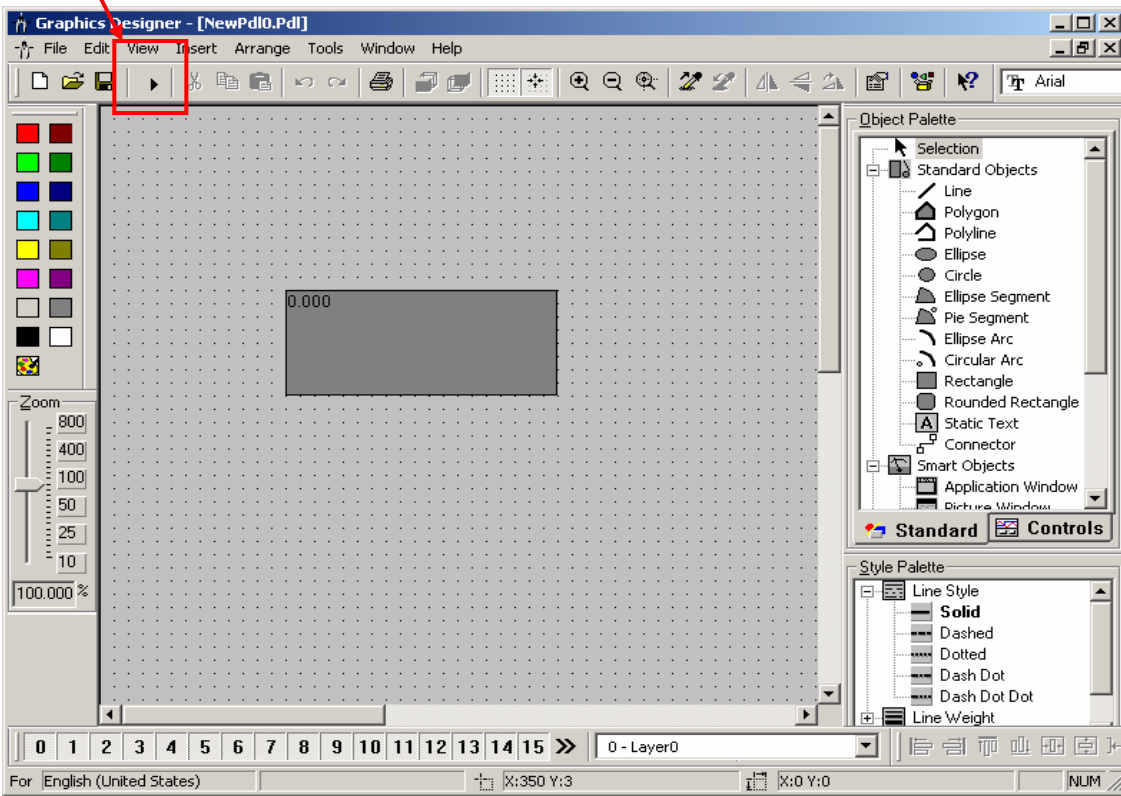
View all the tags



Select the tag you have created.



Run the SCADA program.



Under normal condition

