



Configuration Manual For SCADA

► *RSView 32*



Table of Contents

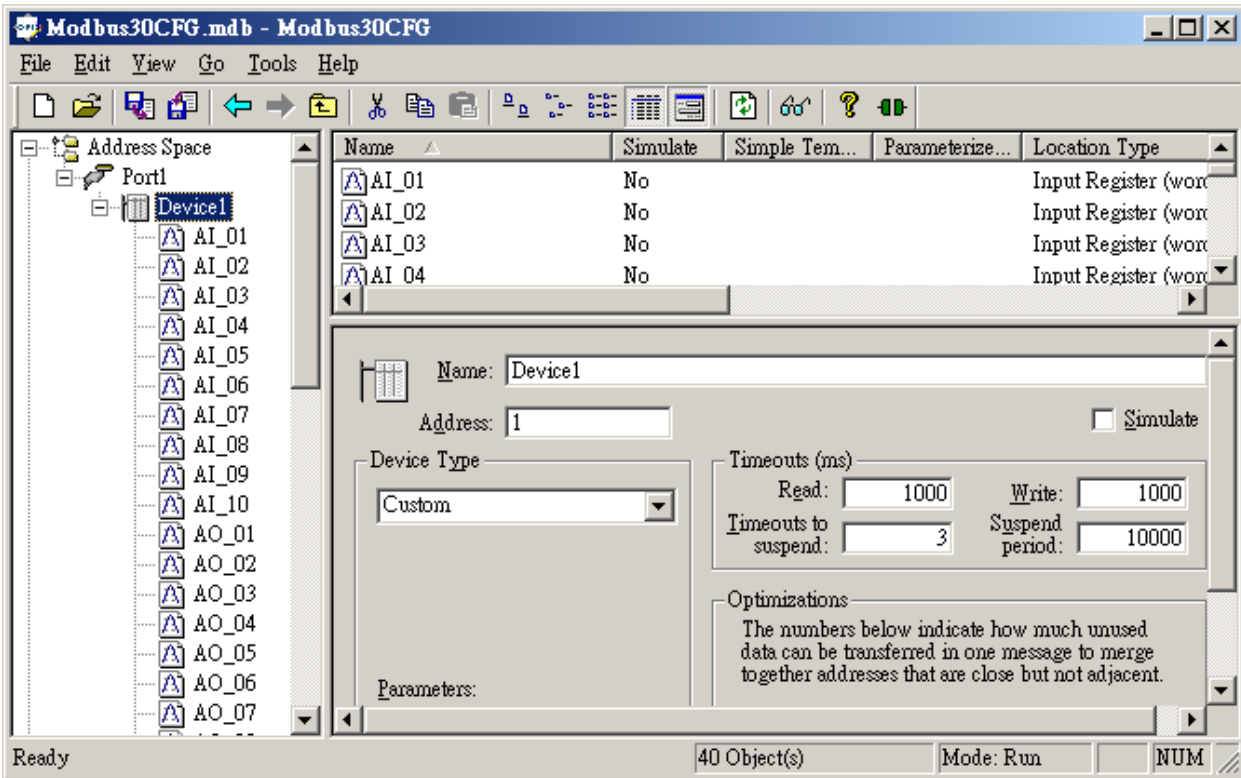
Chapter 1 RView32.....	3
1-1 Set up OPC Server.....	4
1-2 Connect OPC Client to OPC Server through RView32	5

Chapter 1

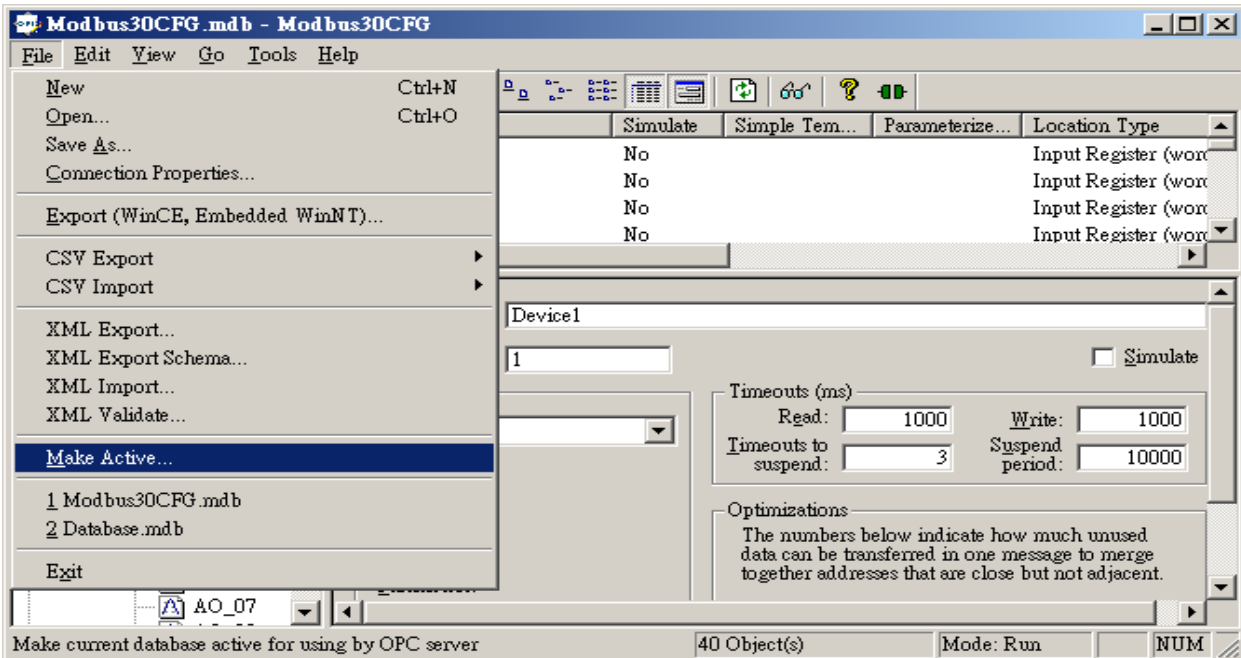
RSView32

1-1 Set up OPC Server

Please create the tags according to the Configuration Manual.

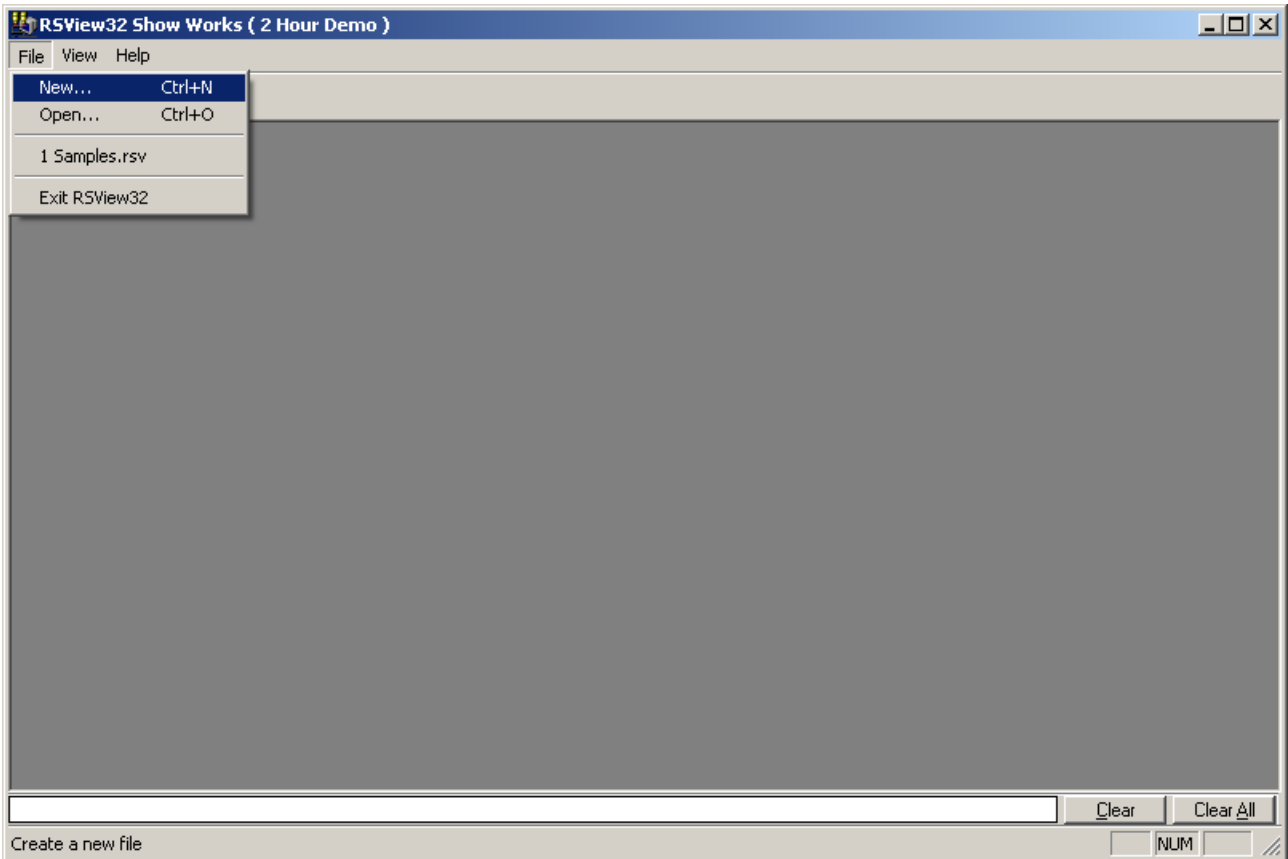


Later, click [File] → [Make Active] to activate new created configuration file.

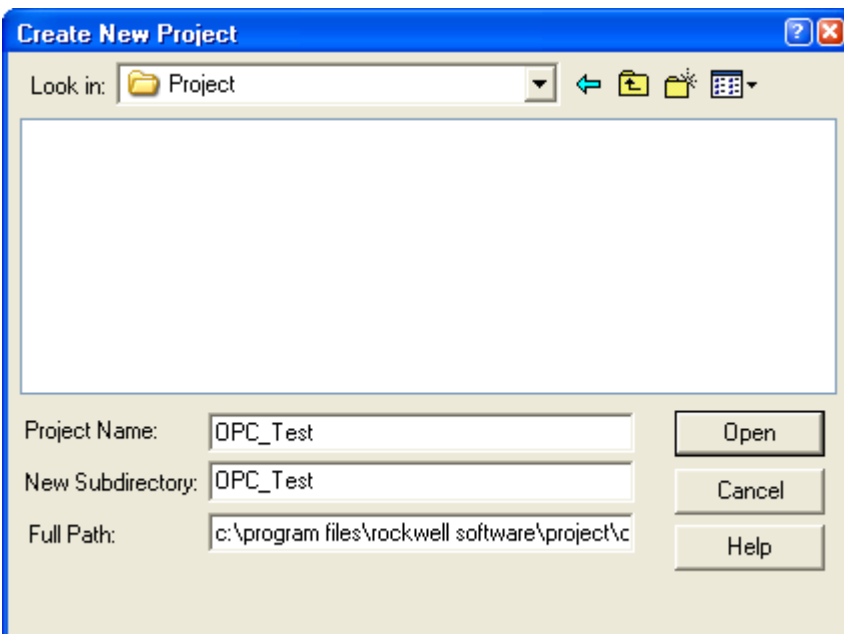


1-2 Connect OPC Client to OPC Server through RSView32

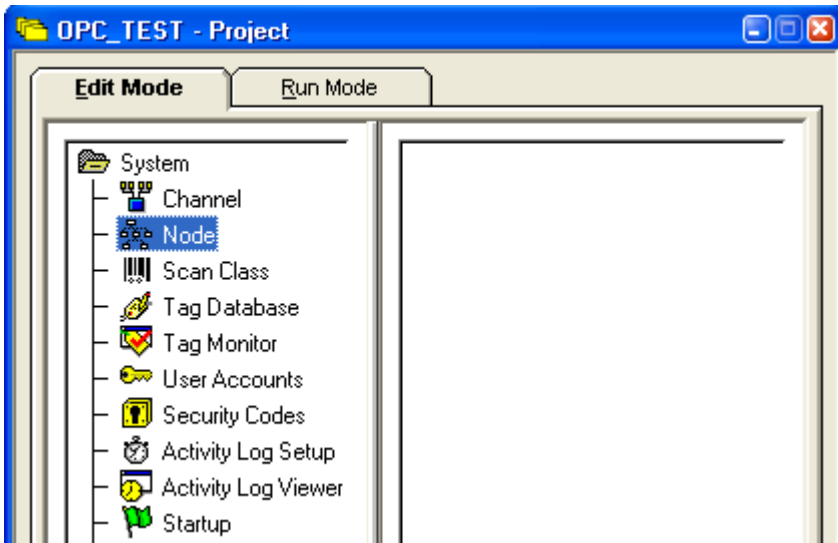
Start RSView32 Works selecting [File] → [New]



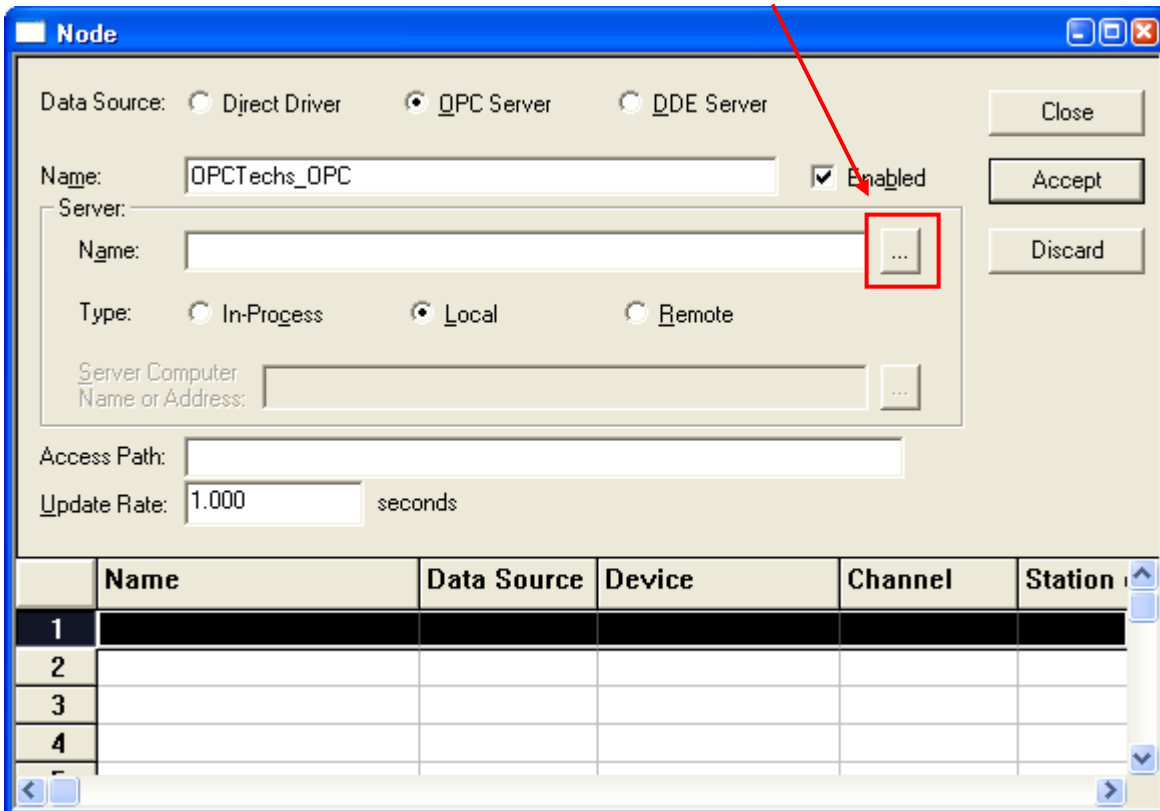
Define the path, and then click [Open].



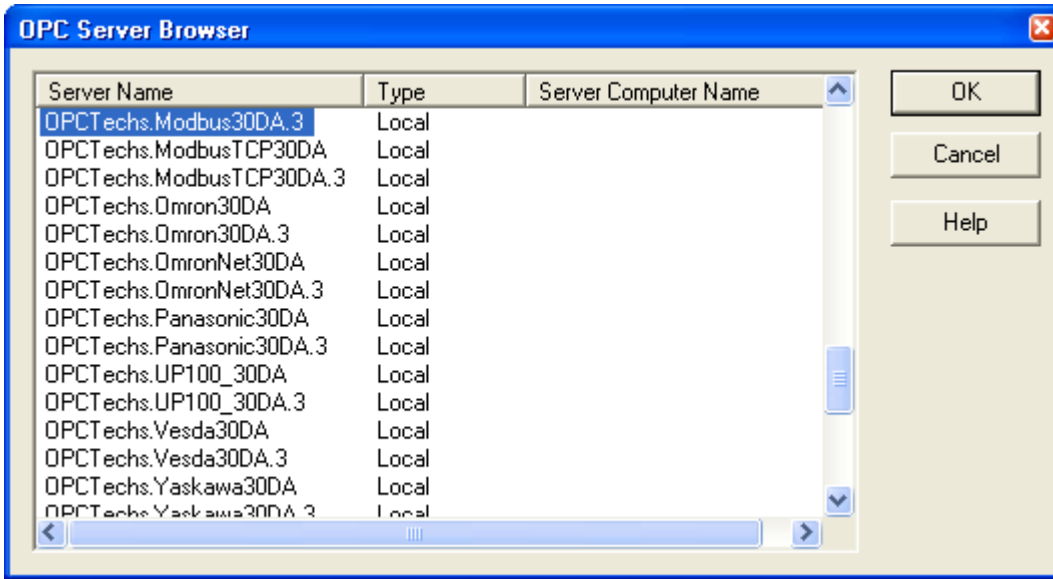
Click [Node] to set up OPC Server communication.



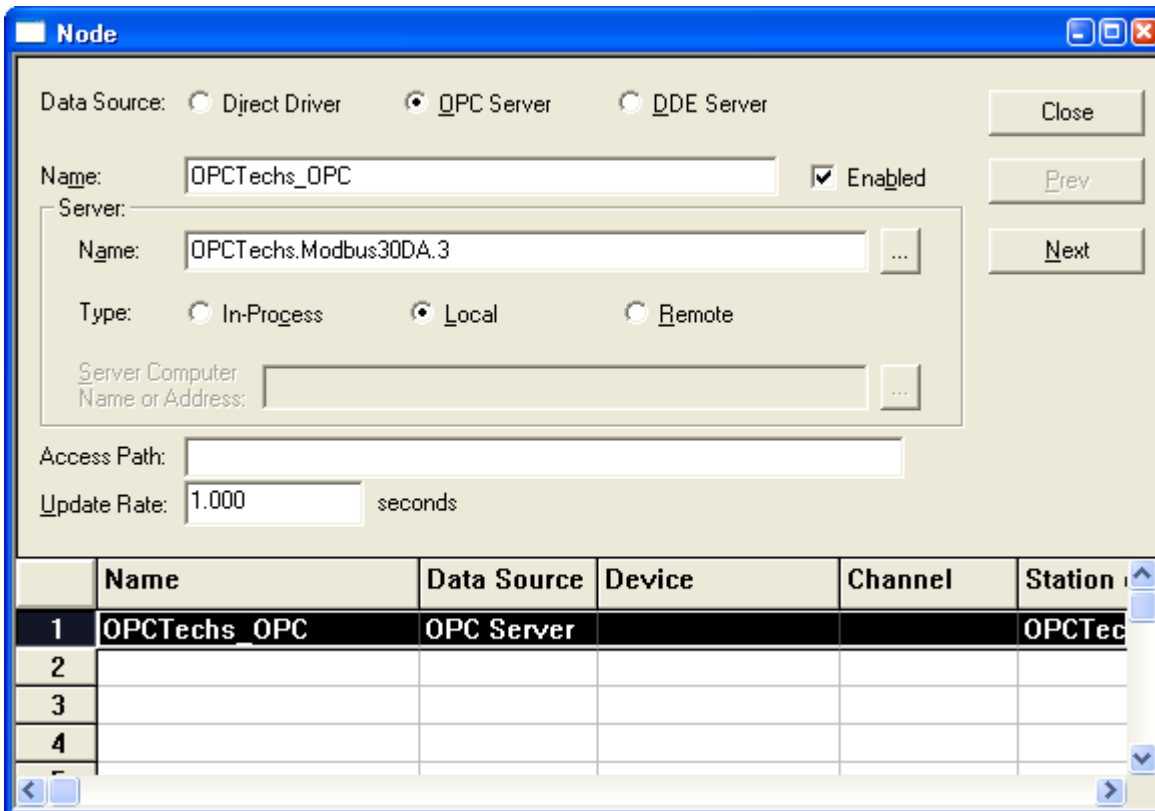
Select the OPC Server and then click this button to view all the OPC Server.



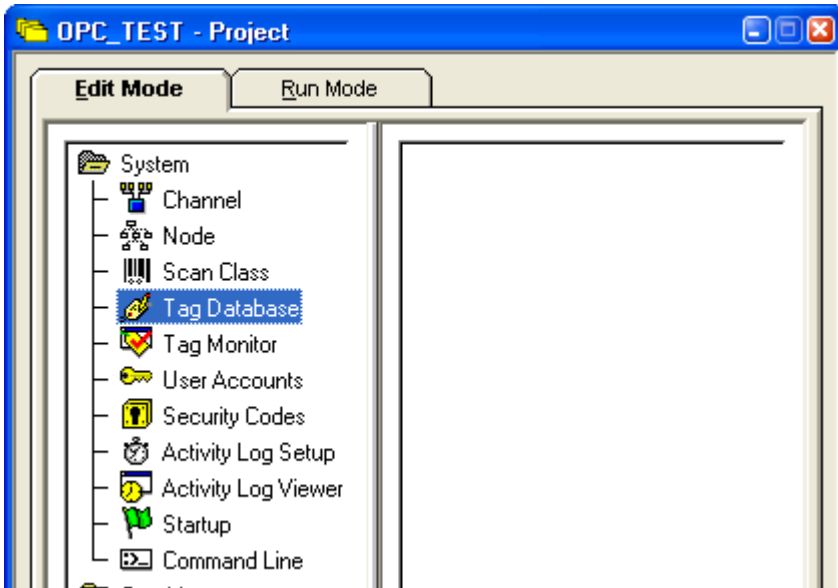
Select the OPC Server to be connected.



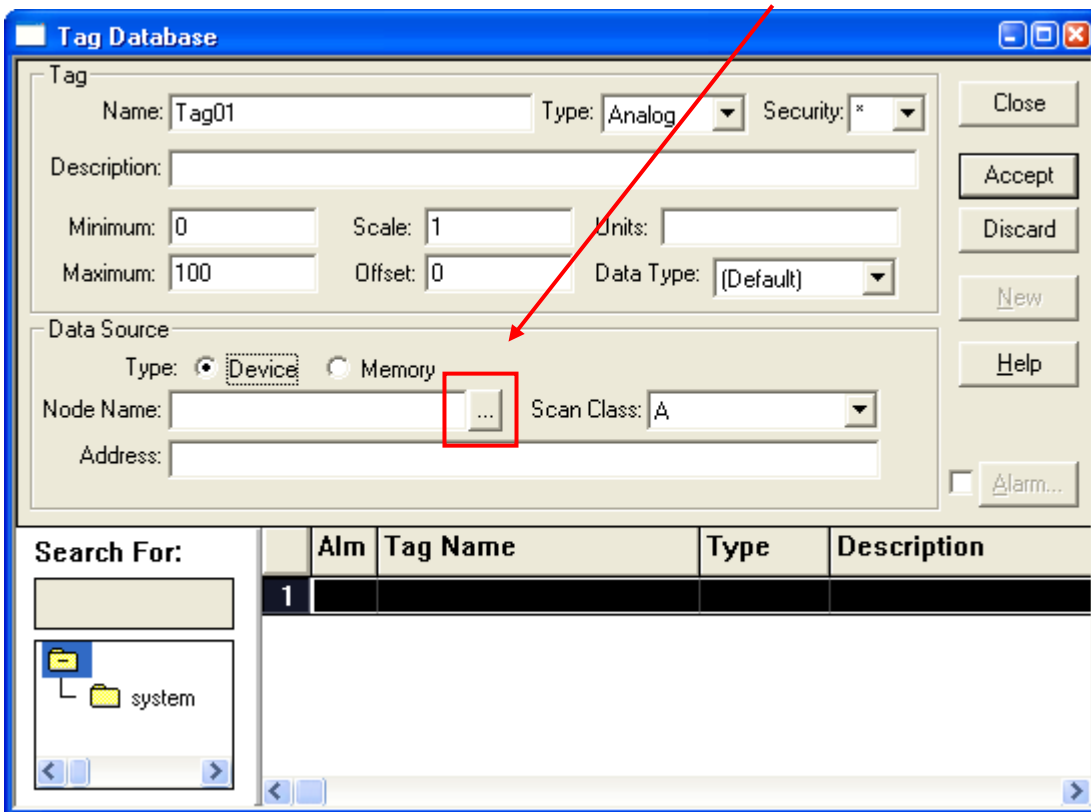
Click [Accept] to add in the OPC Server you just selected; then click [Close].



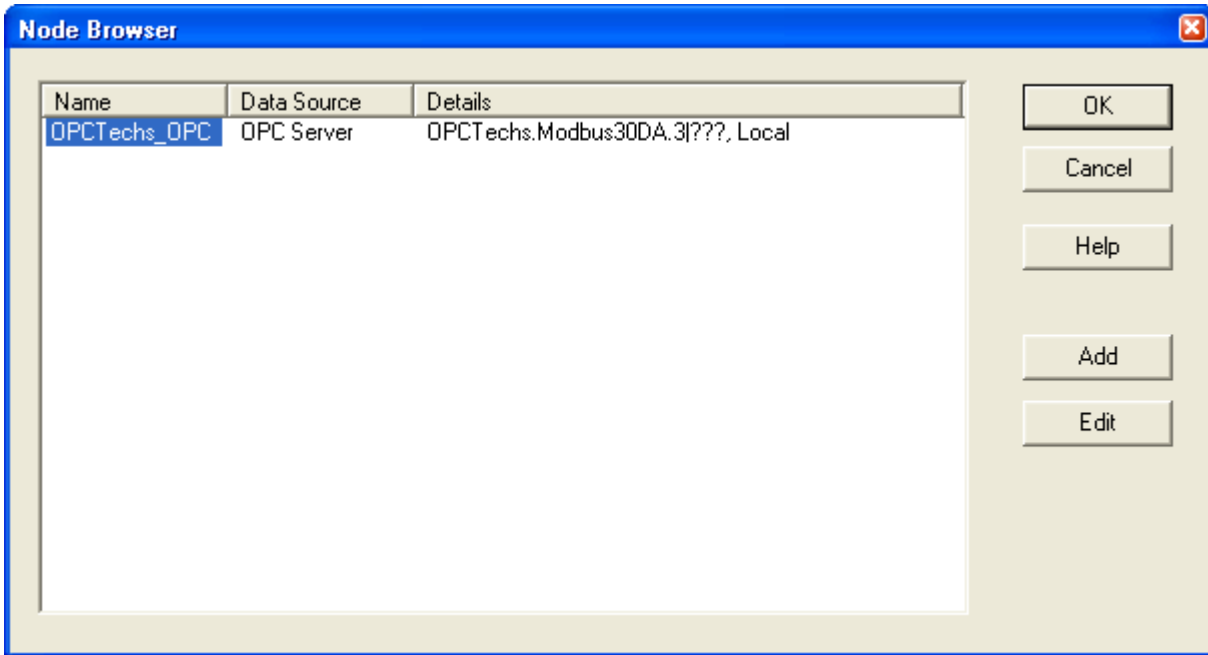
Click [Tag Database] to add new Tag.



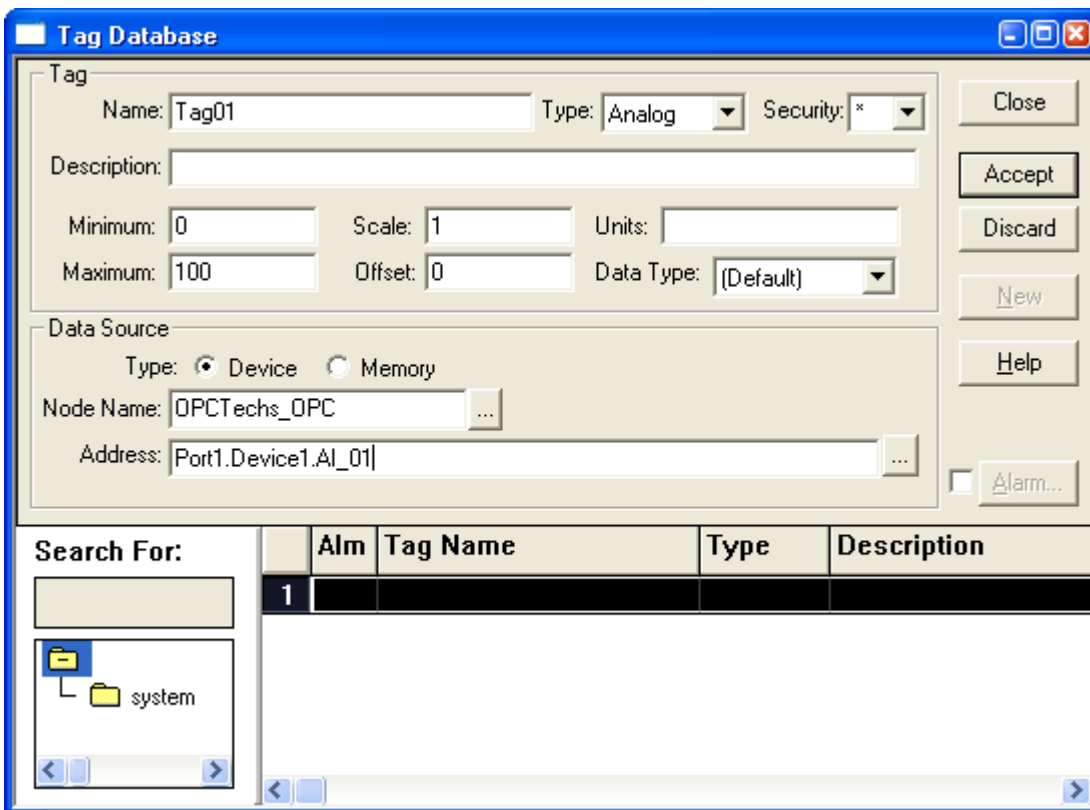
Data Source → Type to select the Device and then choose [Node Name].



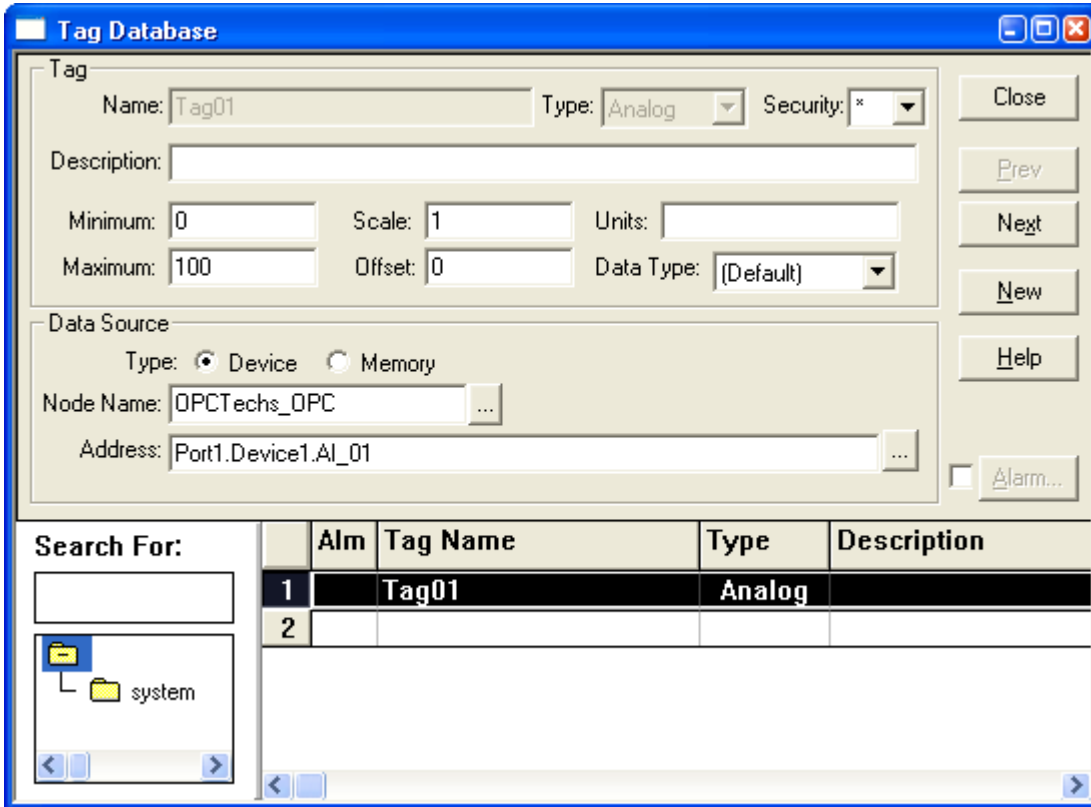
Select the Node and click [OK].



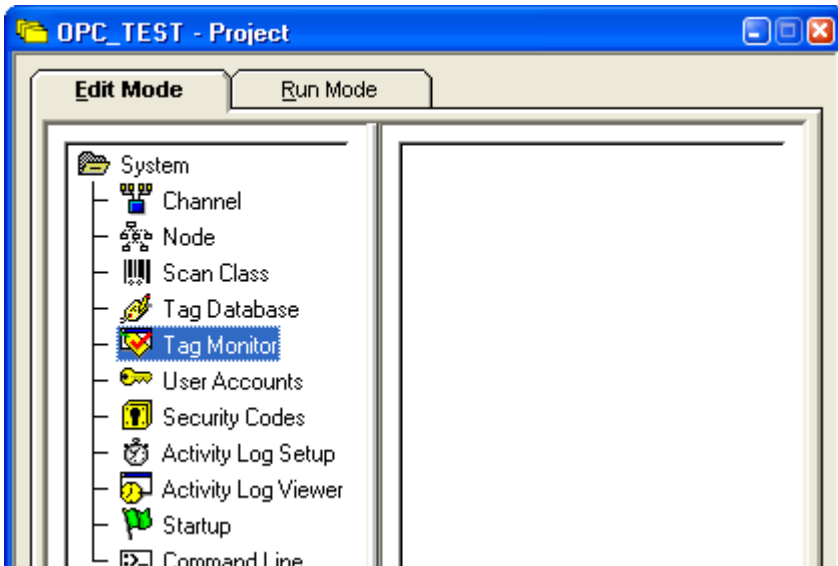
Write down the Dataltem path of the OPC Server in the [Address].



Please select [Accept].



Click [Tag Monitor] to show up all the Tags you have just defined.



Name Write down the Tag Name.

	?	Tag Name	Value	State	Description
1					
2					
3					
4					
5					
6					
7					
8					
9					
10					
11					

Press "Enter" on the keyboard after setting.

	?	Tag Name	Value	State	Description
1	?	Tag01			
2					
3					
4					
5					
6					
7					
8					
9					
10					
11					

Under normal condition

	?	Tag Name	Value	State	Description
1	Y	Tag01	55	valid	
2					
3					
4					
5					
6					
7					
8					
9					
10					
11					