



Configuration Manual For SCADA

► *LookoutDirect 4*

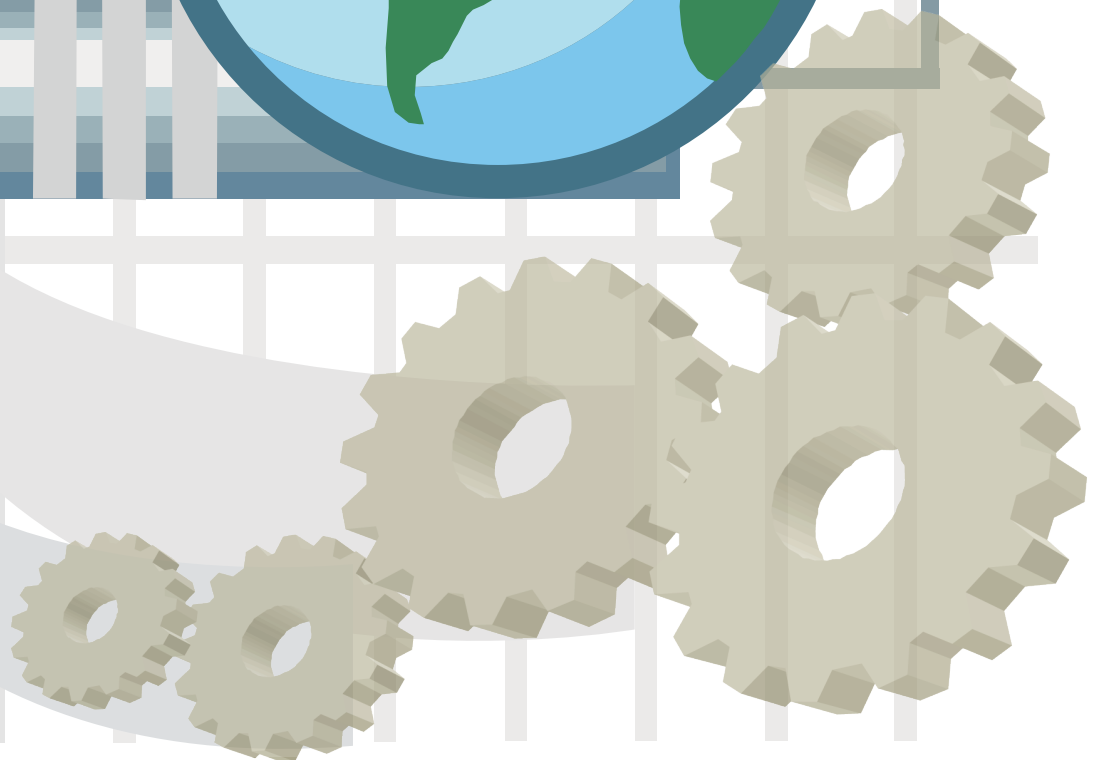


Table of Contents

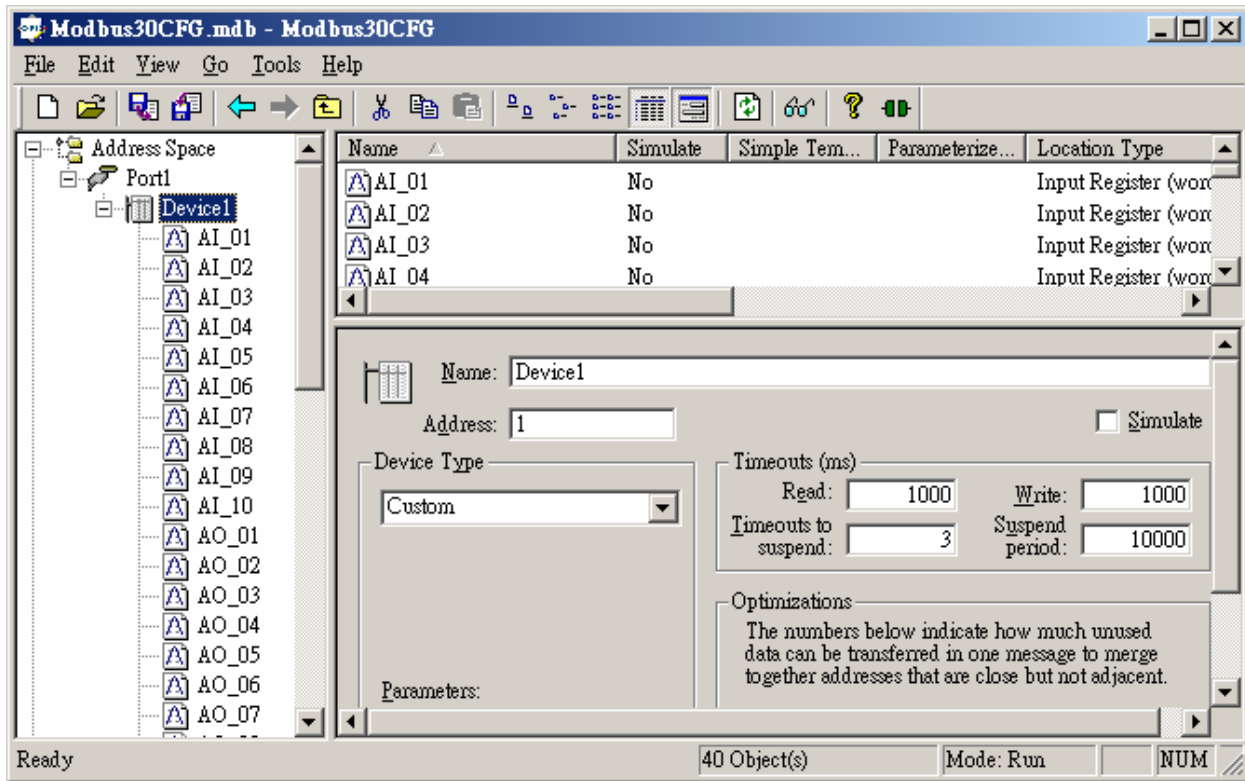
Chapter 1 LookoutDirect 4	3
1-1 Set up OPC Server.....	4
1-2 Connect OPC Client to OPC Server through LookoutDirect 4.....	5

Chapter 1

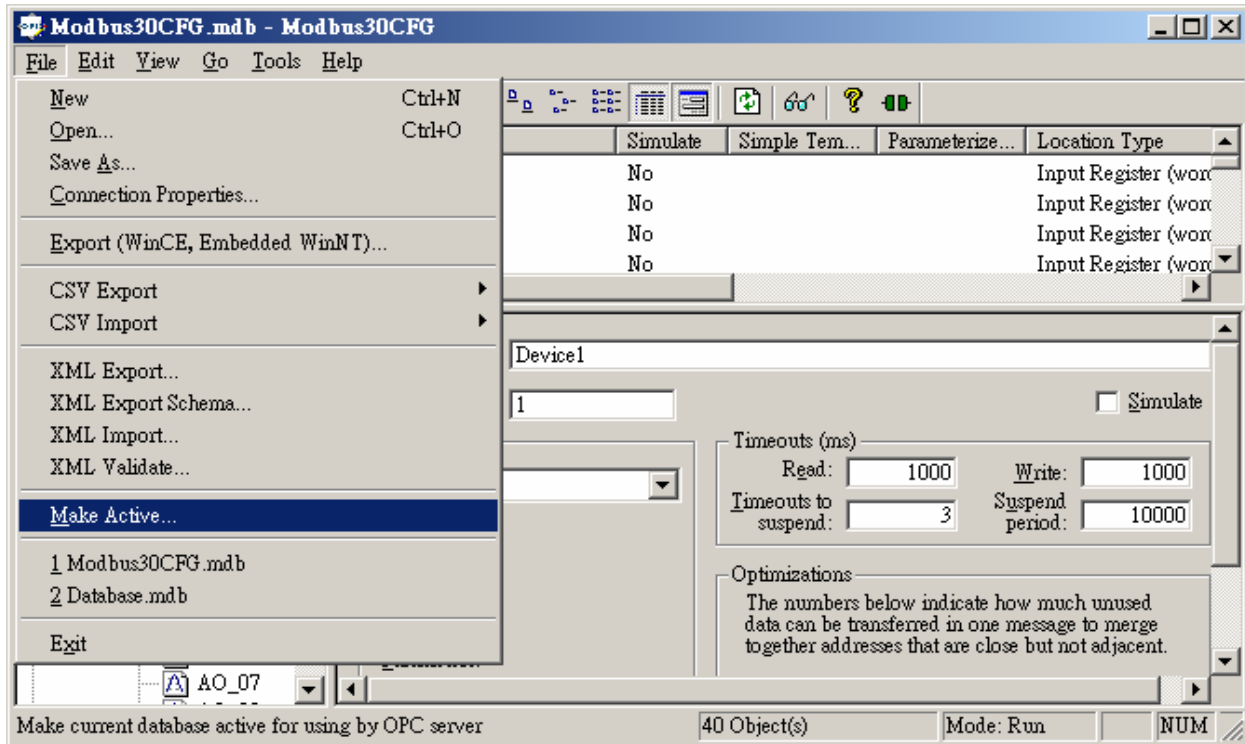
LookoutDirect 4

1-1 Set up OPC Server

Please create the tags according to the Configuration Manual.

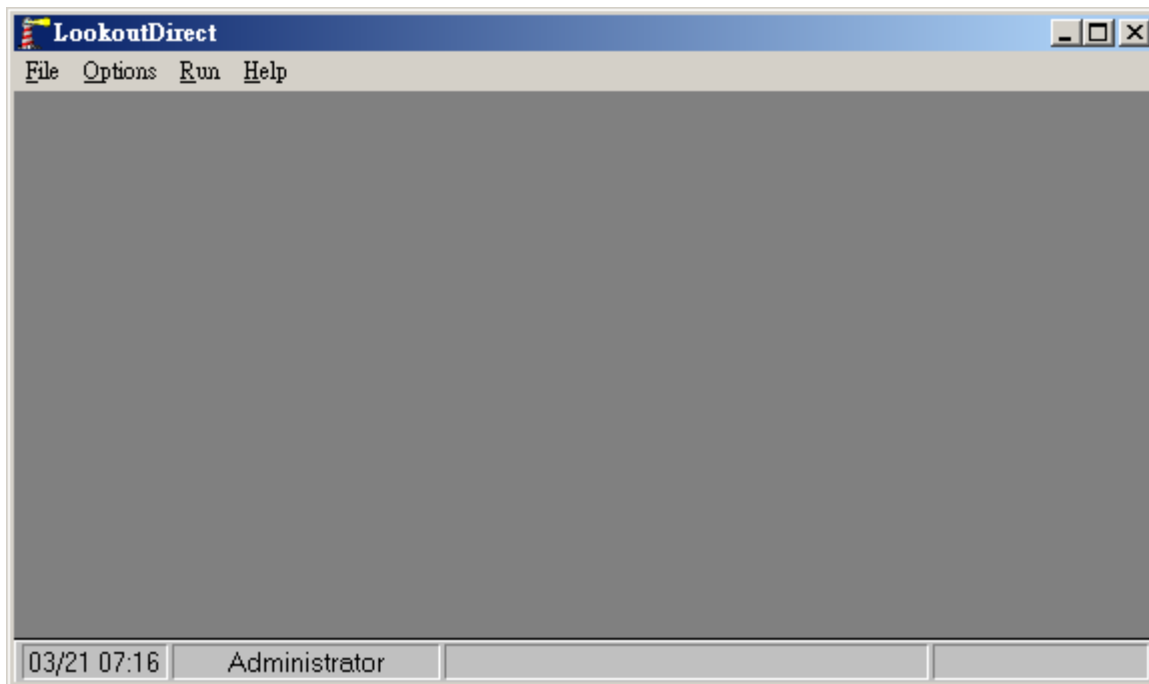


Later, click [File] → [Make Active] to activate new created configuration file.

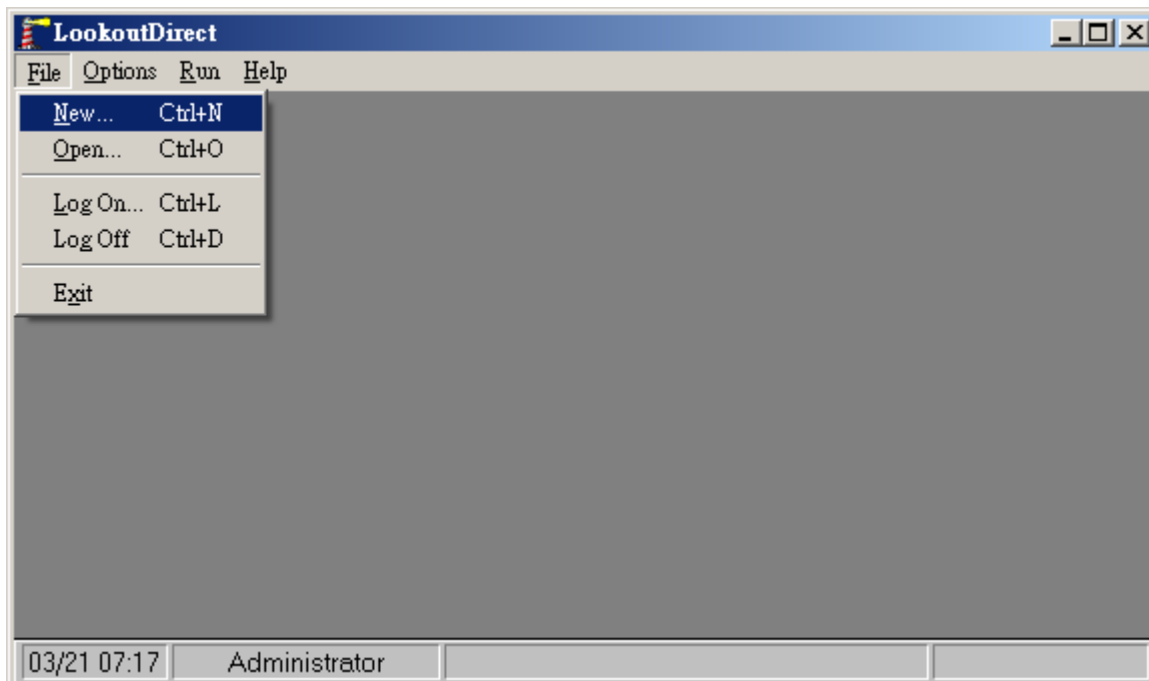


1-2 Connect OPC Client to OPC Server through LookoutDirect 4

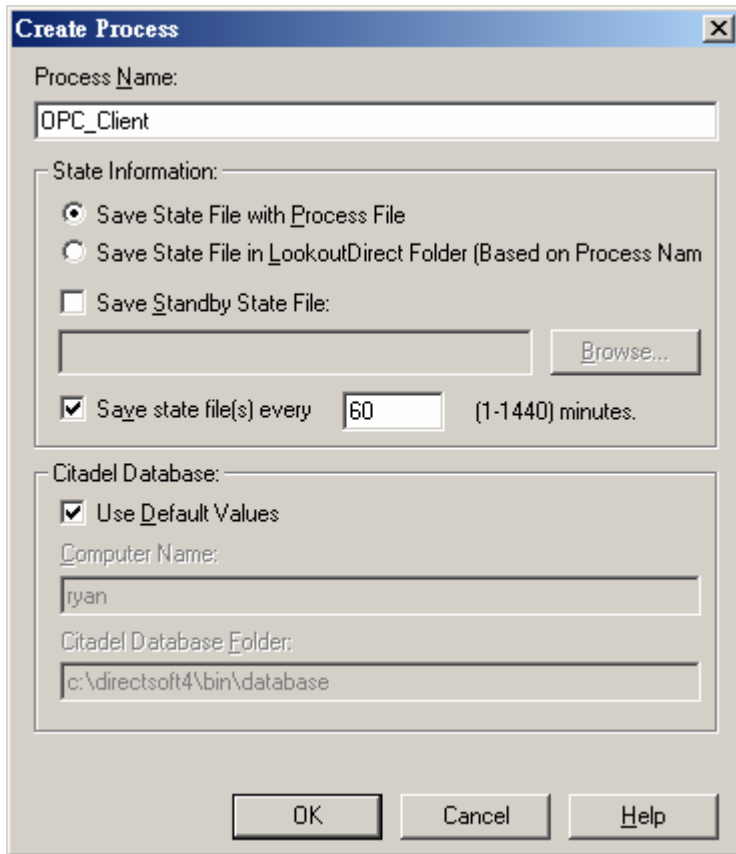
[Start] → [Programs] → [DirectSOFT 4] → [LookoutDirect Tools] → [LookoutDirect]



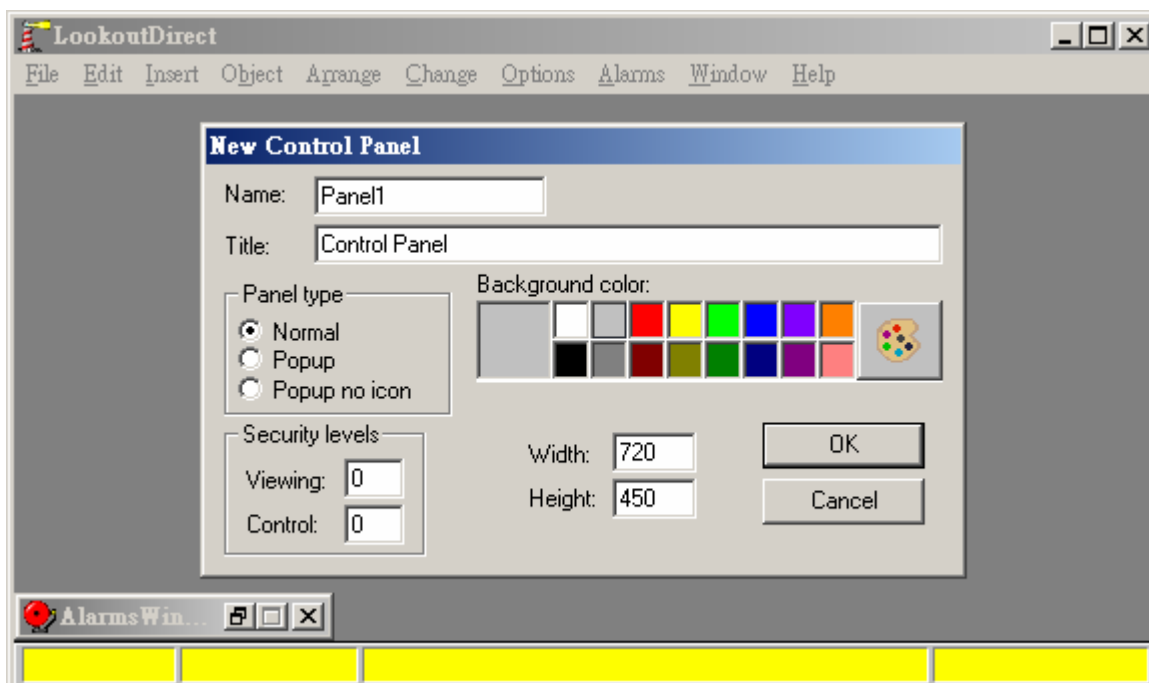
Please select [File] → [New] to create a new process.



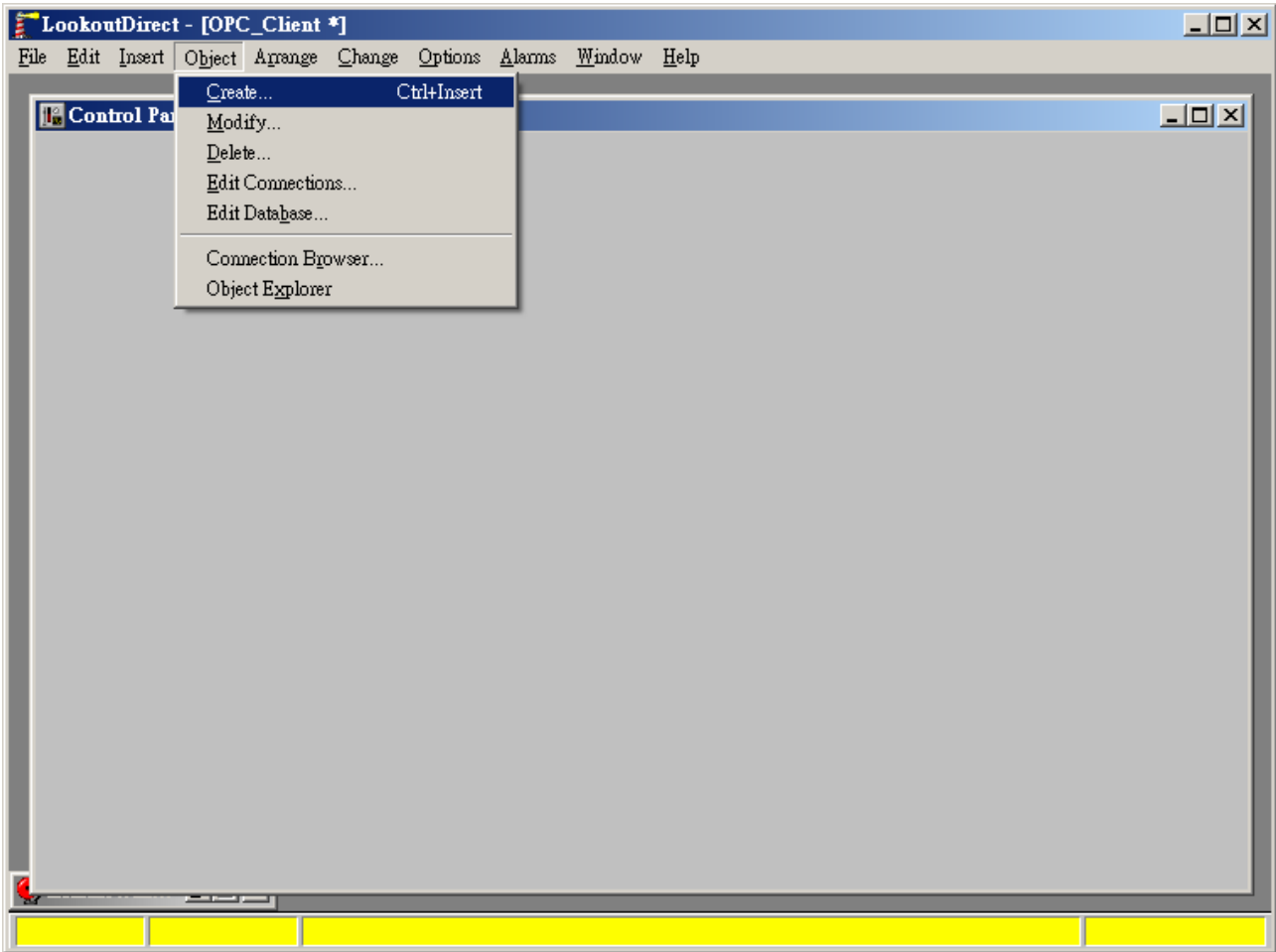
Type in the Process Name.



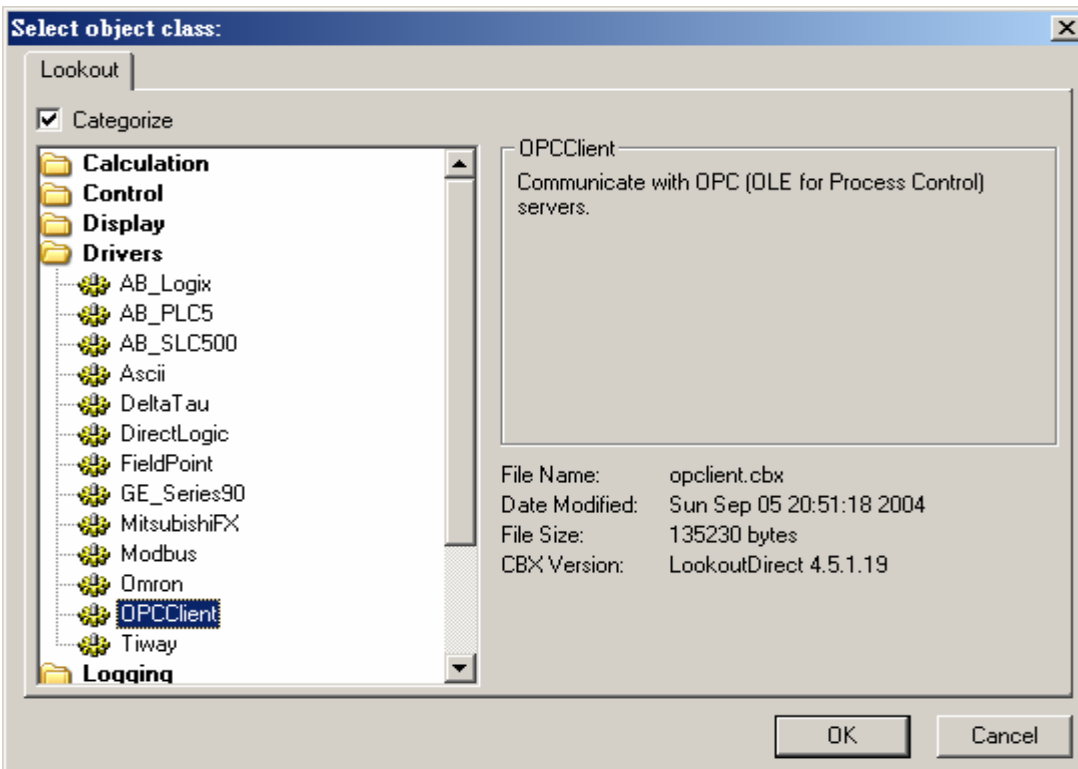
Click [OK].



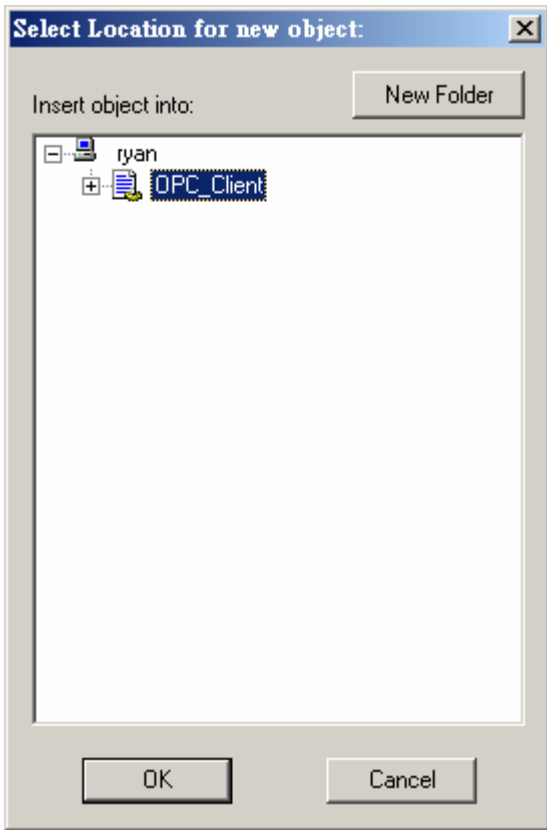
[Object] → [Create]



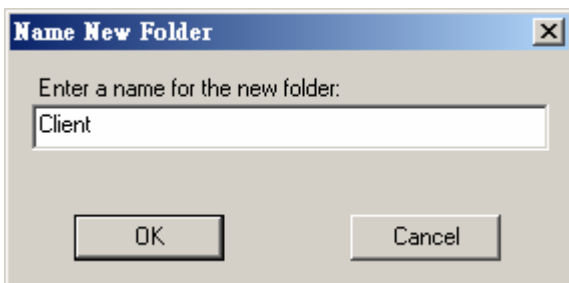
[Drivers] → [OPCClient]



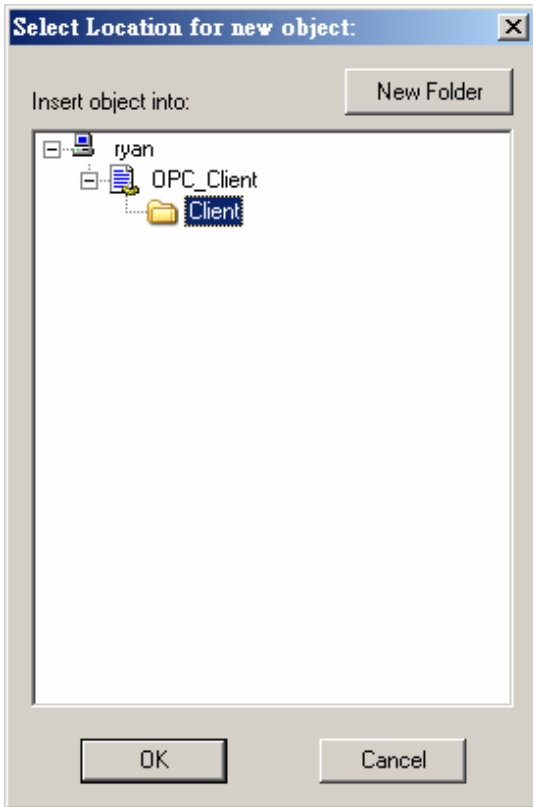
Please choose [New Folder].



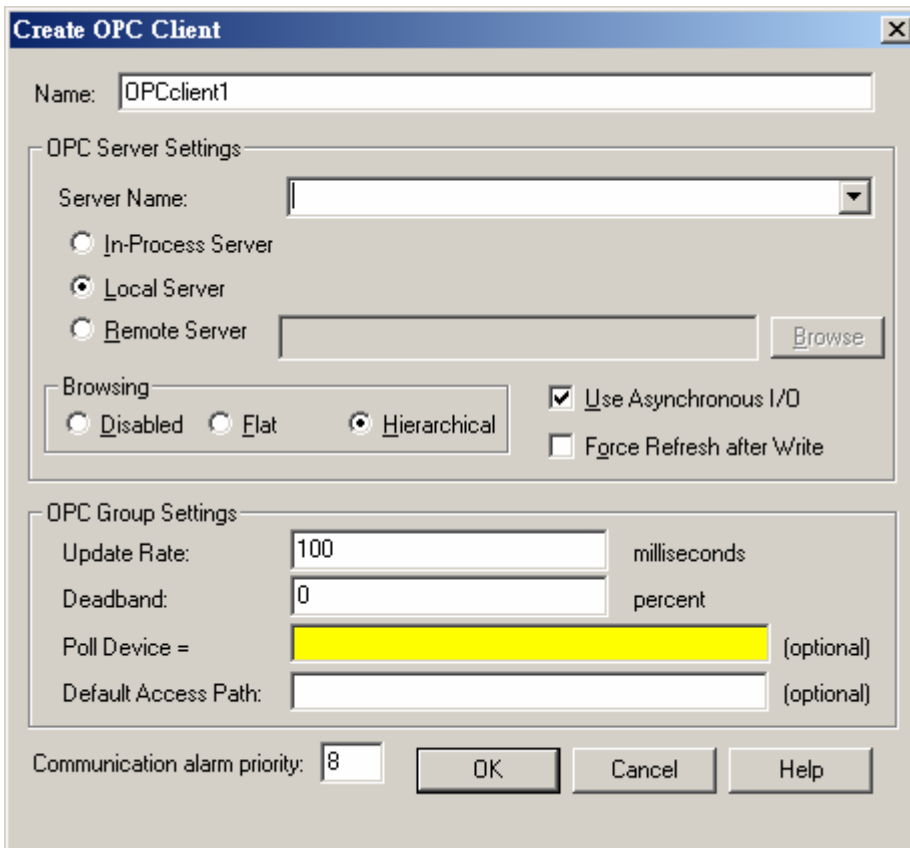
Write down the Folder name.

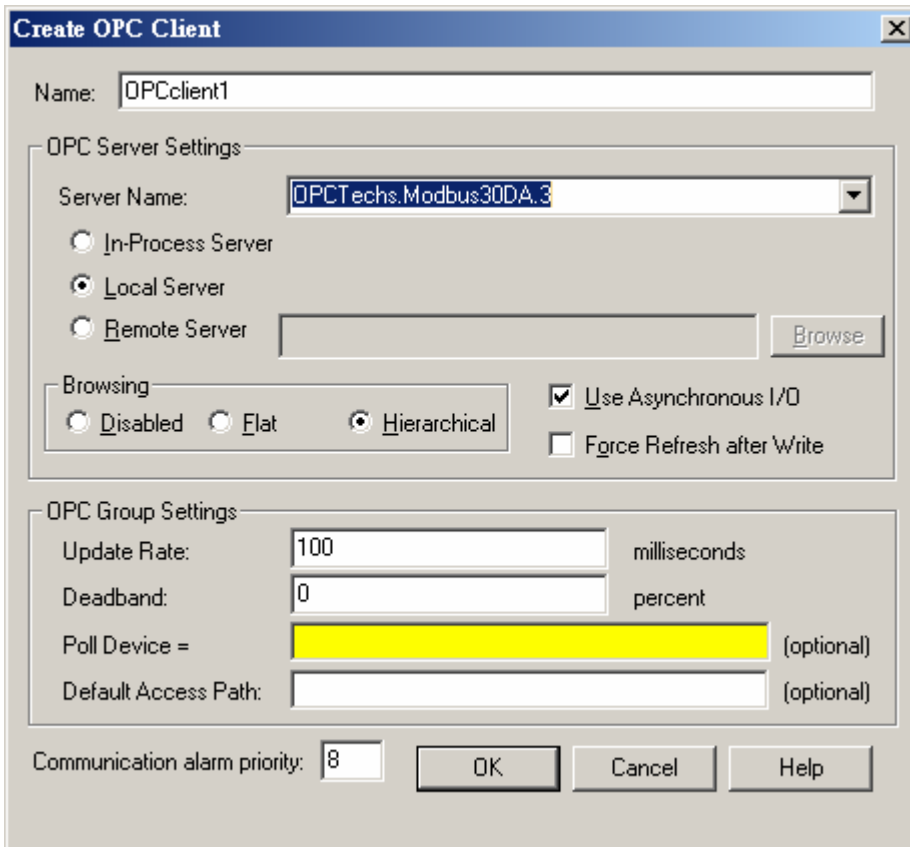


Click [OK].

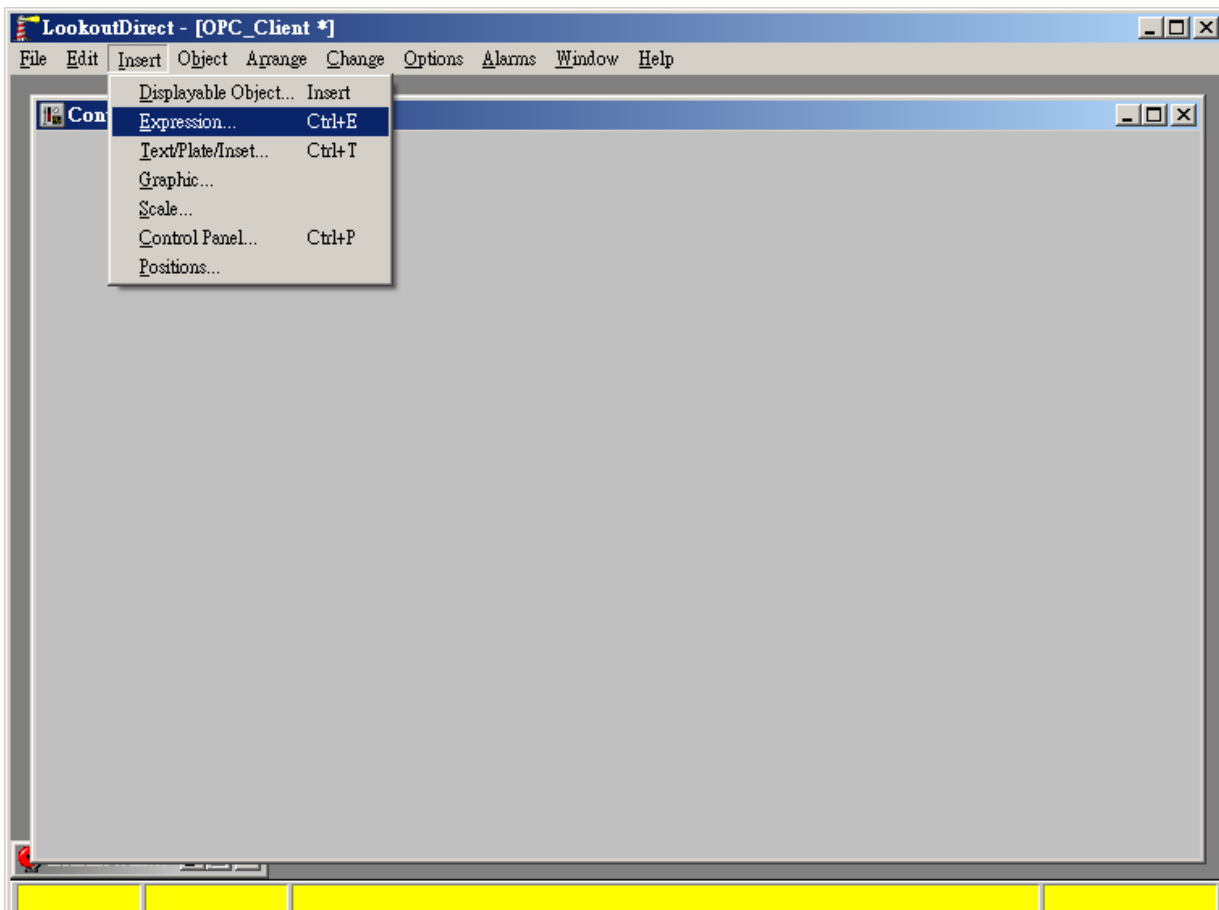


In the column of Server Name, please select the OPC Server you need in the list.

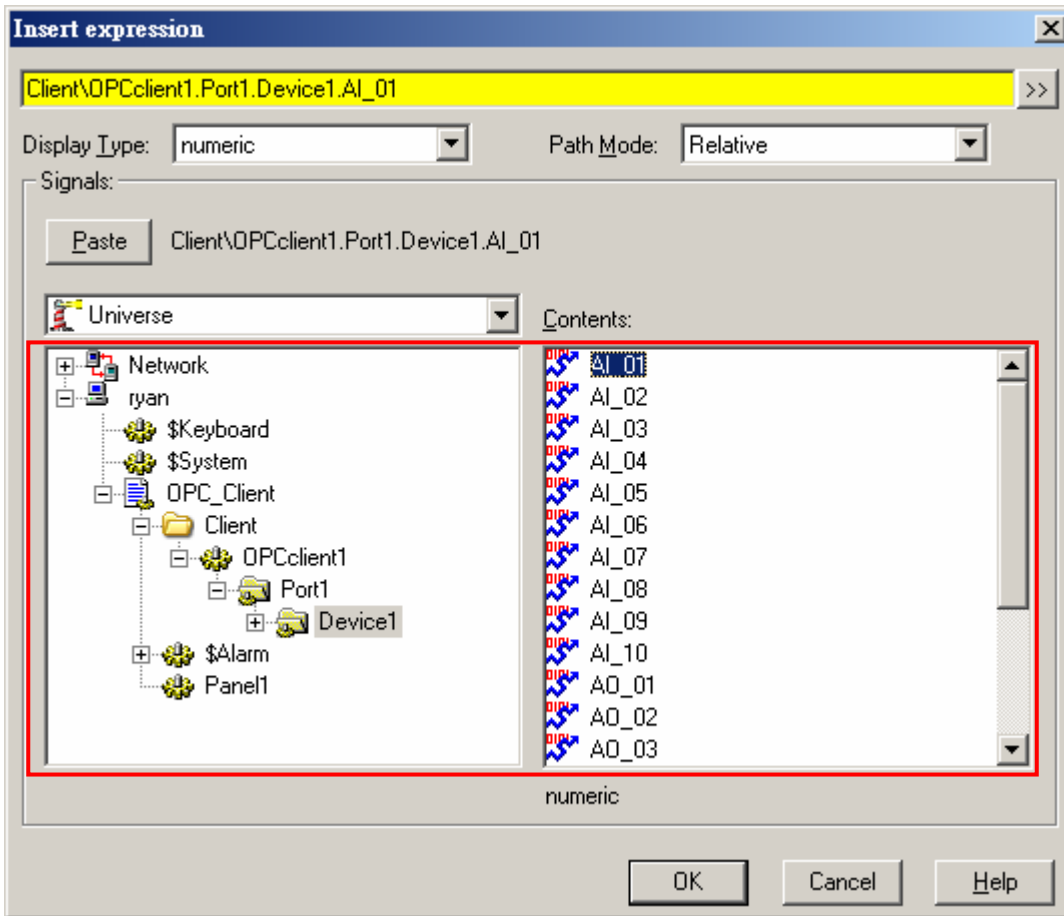




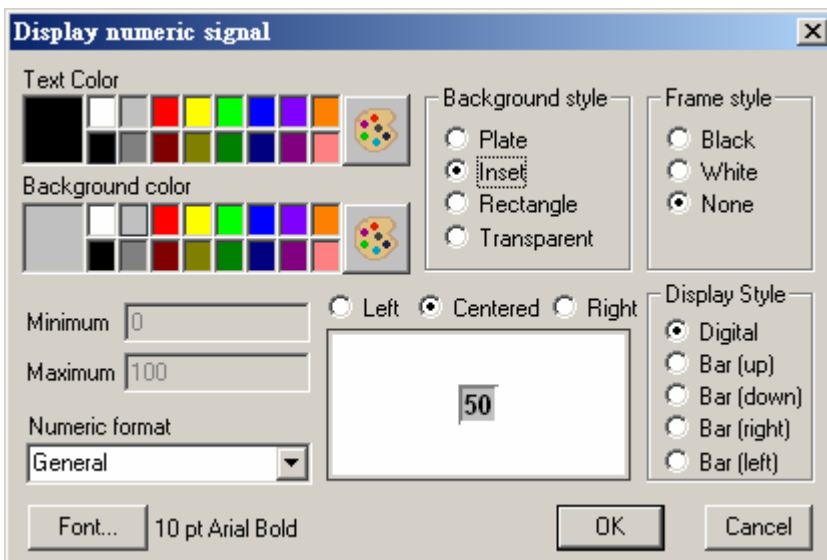
[Insert] → [Expression]



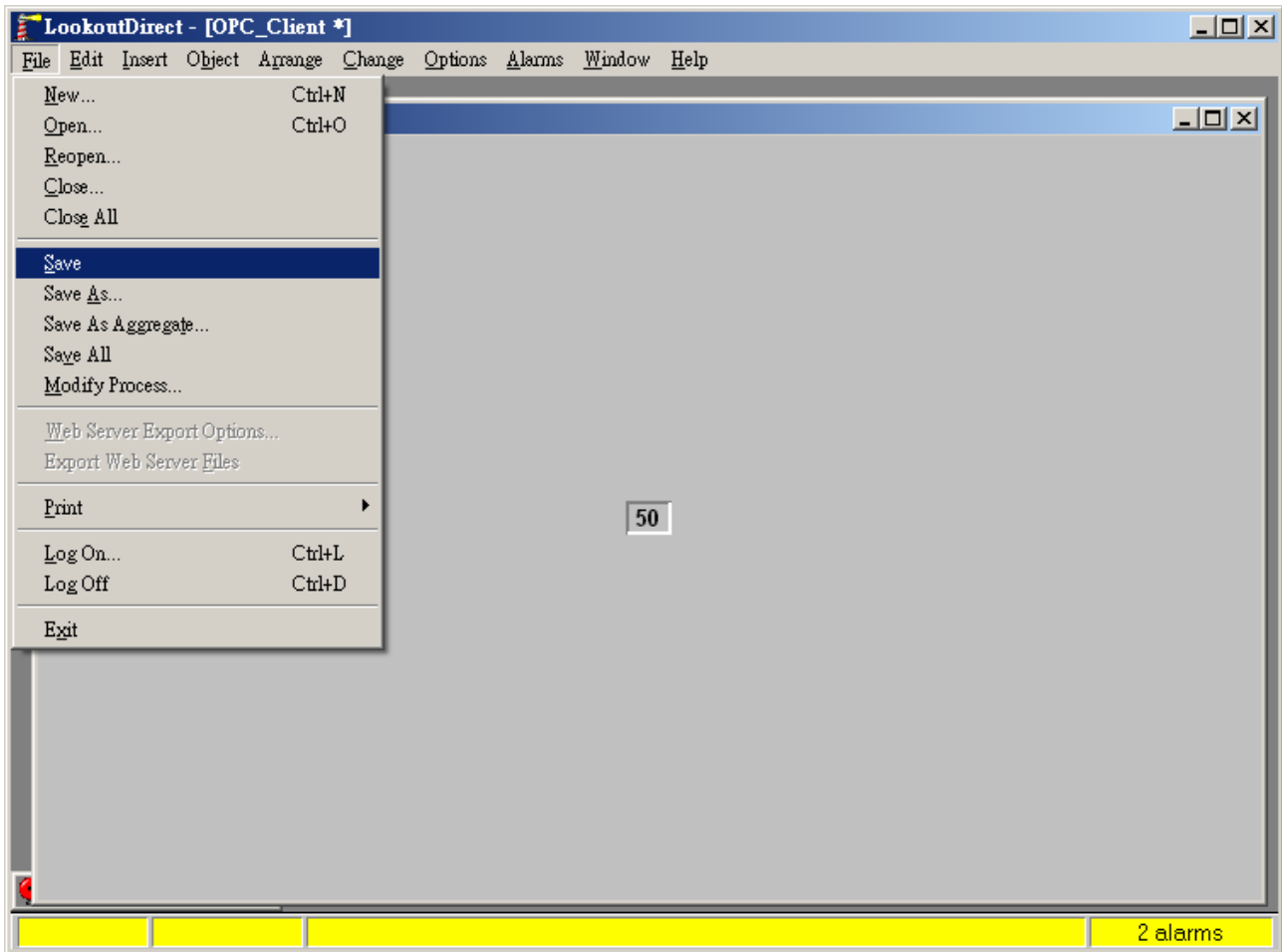
Double click on the Dataltem to be connected.



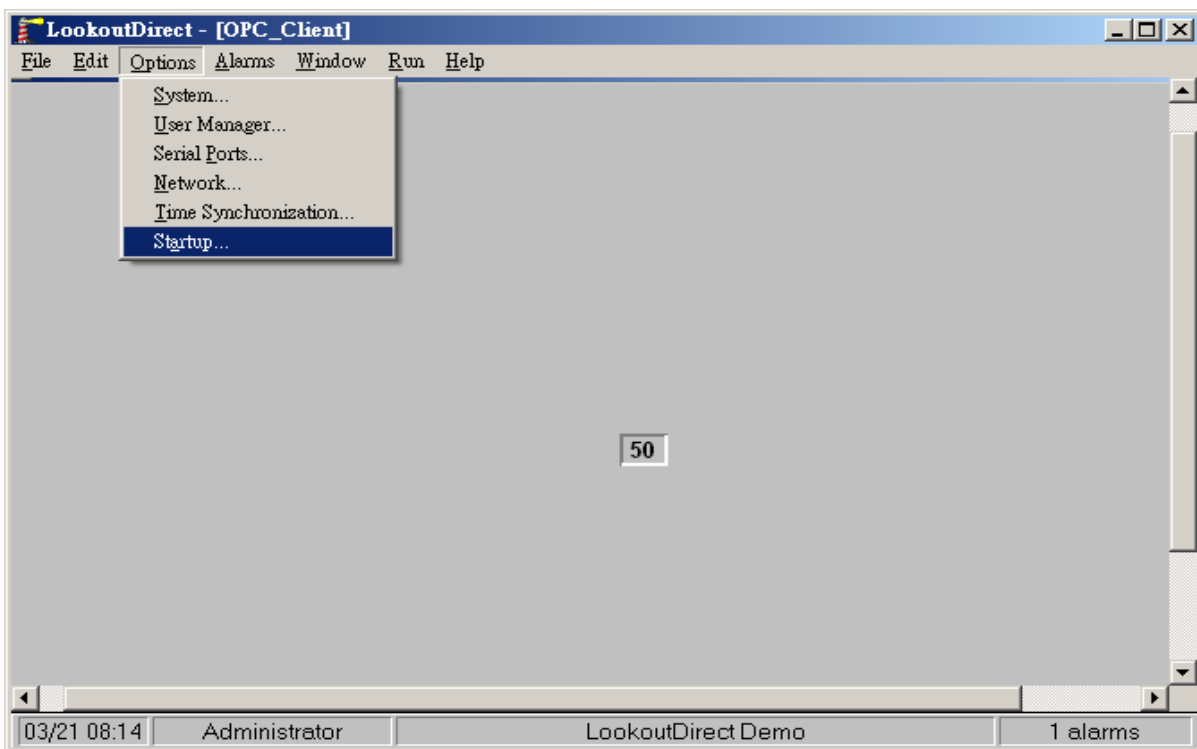
Click [OK].



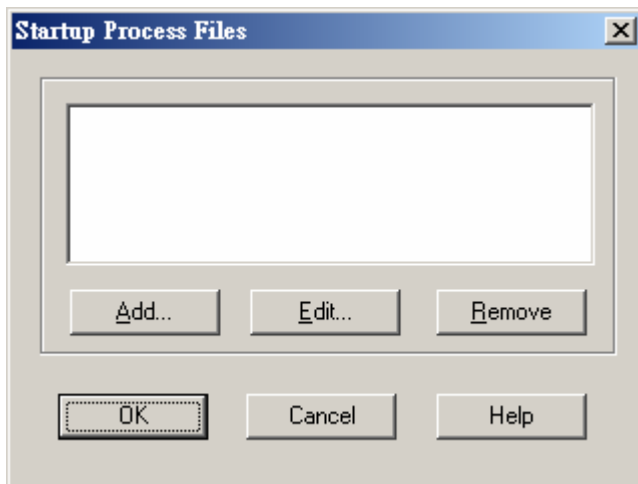
Then, please select [File] → [Save].



Please select [Options] → [Startup].



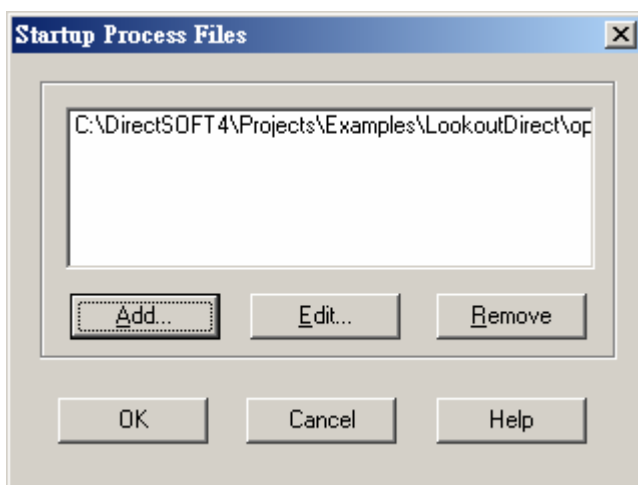
Click [Add].



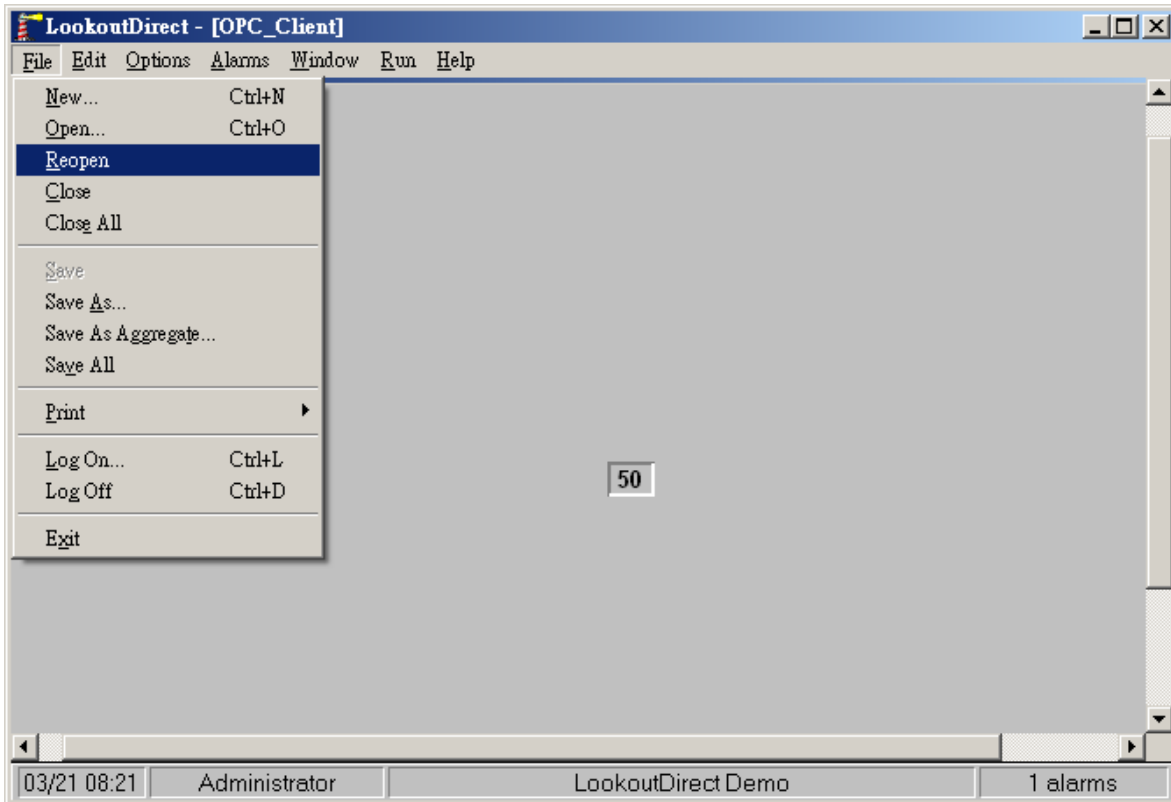
Please choose the “opc_client.l4p” you have created.



Please select [OK].



[New] → [Reopen]



Under normal condition.

