



Configuration Manual For SCADA

▶ ***CIMPLICITY 7.0***

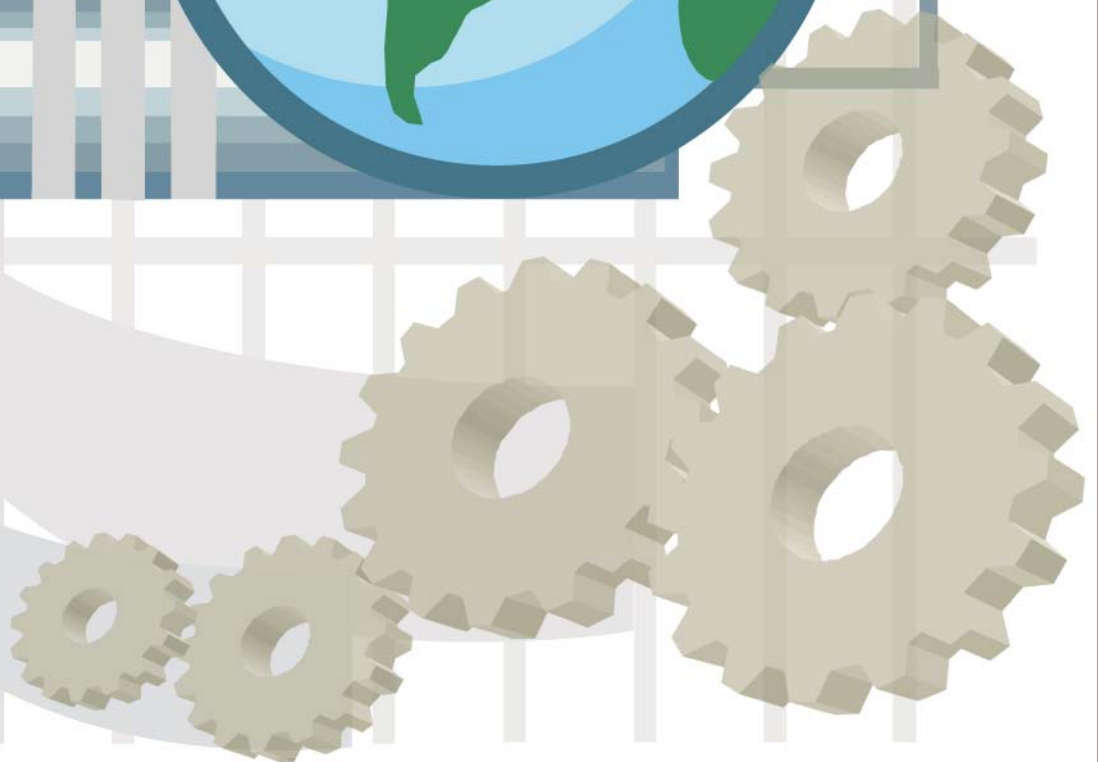


Table of Contents

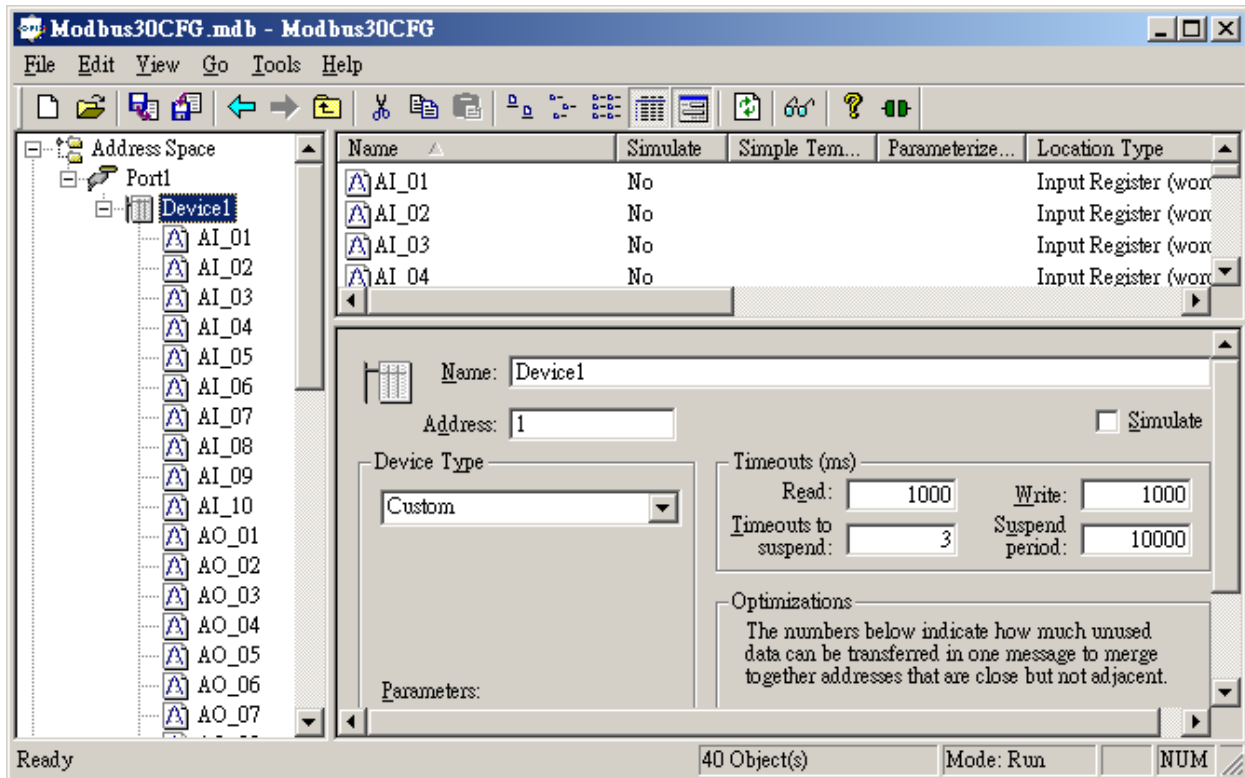
Chapter 1 CIMPPLICITY 7.0	3
1-1 Set up OPC Server	4
1-2 Connect OPC Server to OPC Client through CIMPPLICITY 7.0	5

Chapter 1

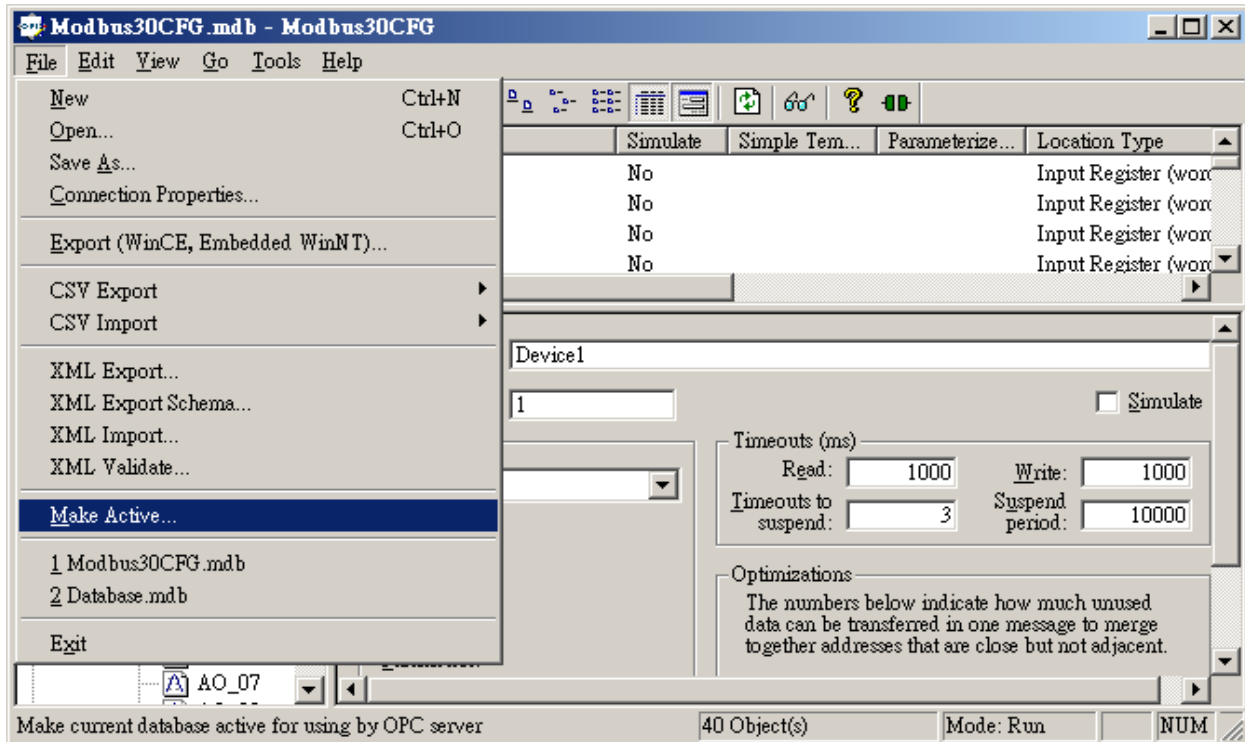
CIMPLICITY 7.0

1-1 Set up OPC Server

Please define the OPC Server according to the user manual.

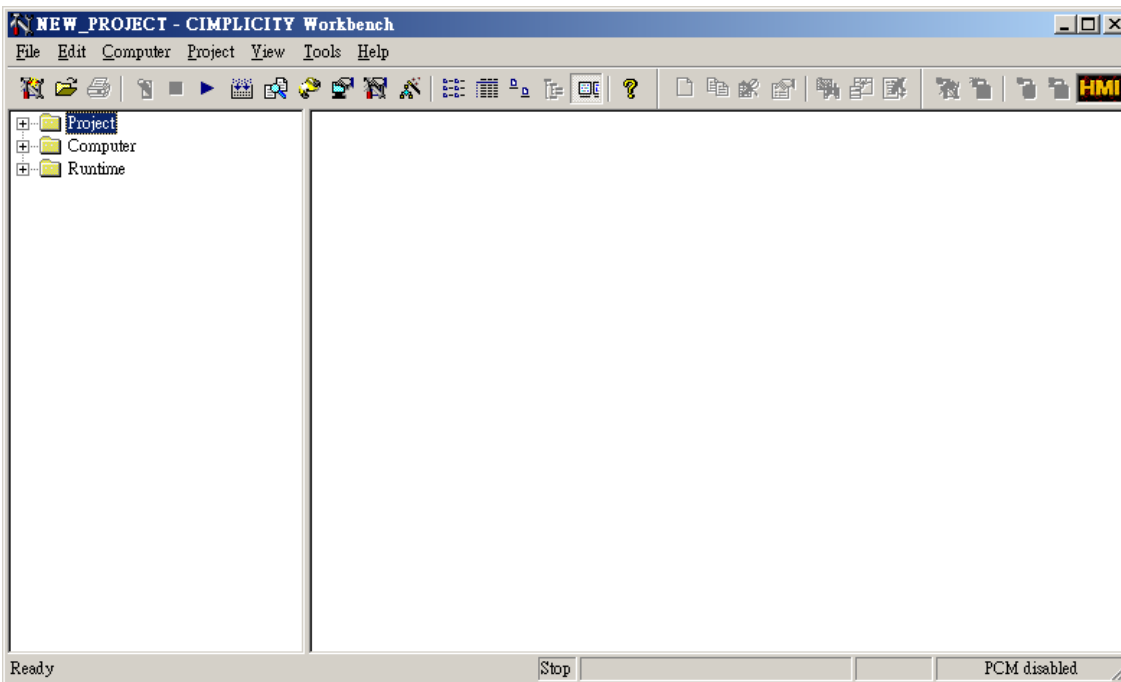


Please click [File] → [Make Active] to save new settings.

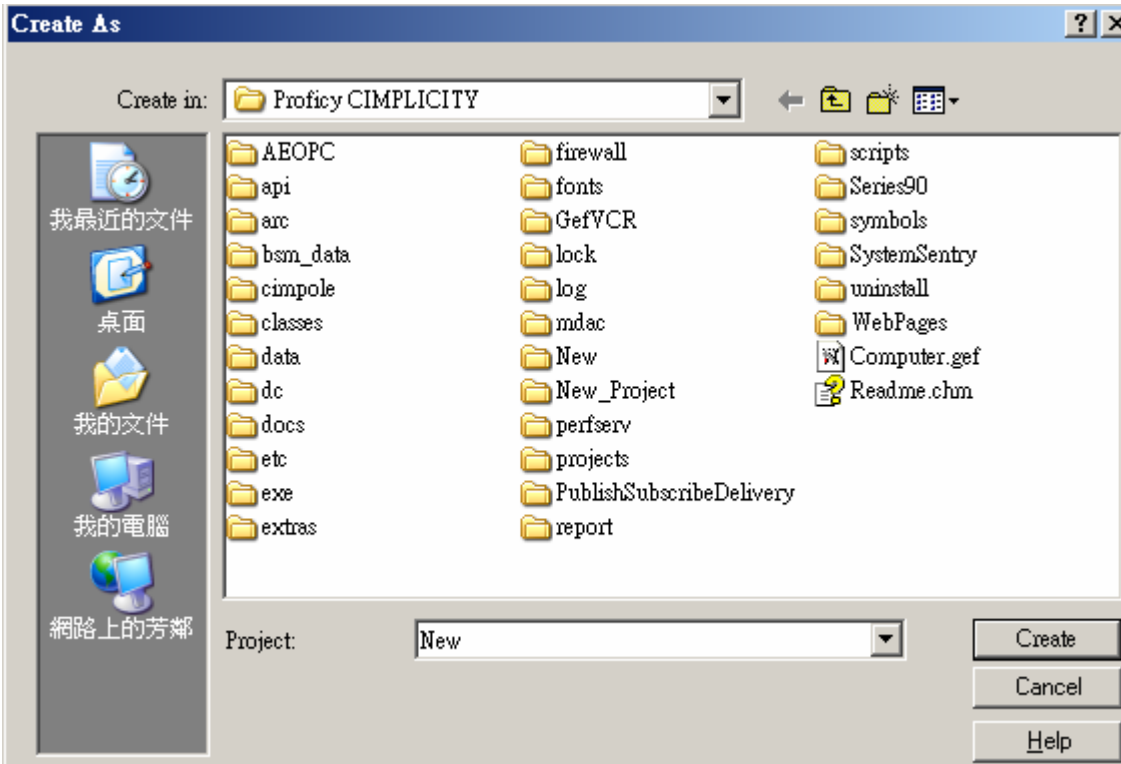


1-2 Connect OPC Server to OPC Client through CIMPLICITY 7.0

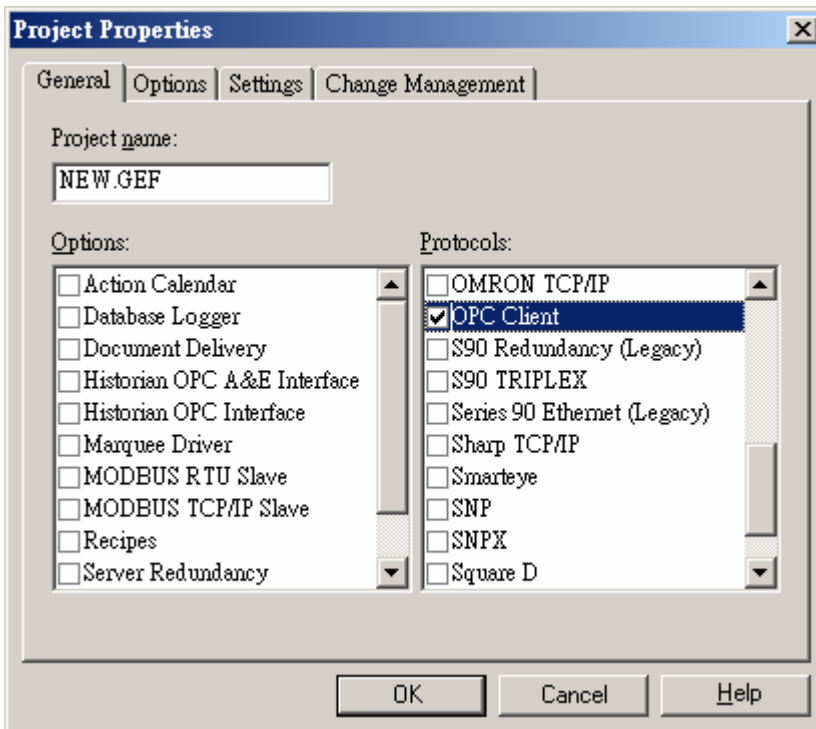
Start CIMPLICITY 7.0, and then select [File] → [New] → [Project].



Save the new project.



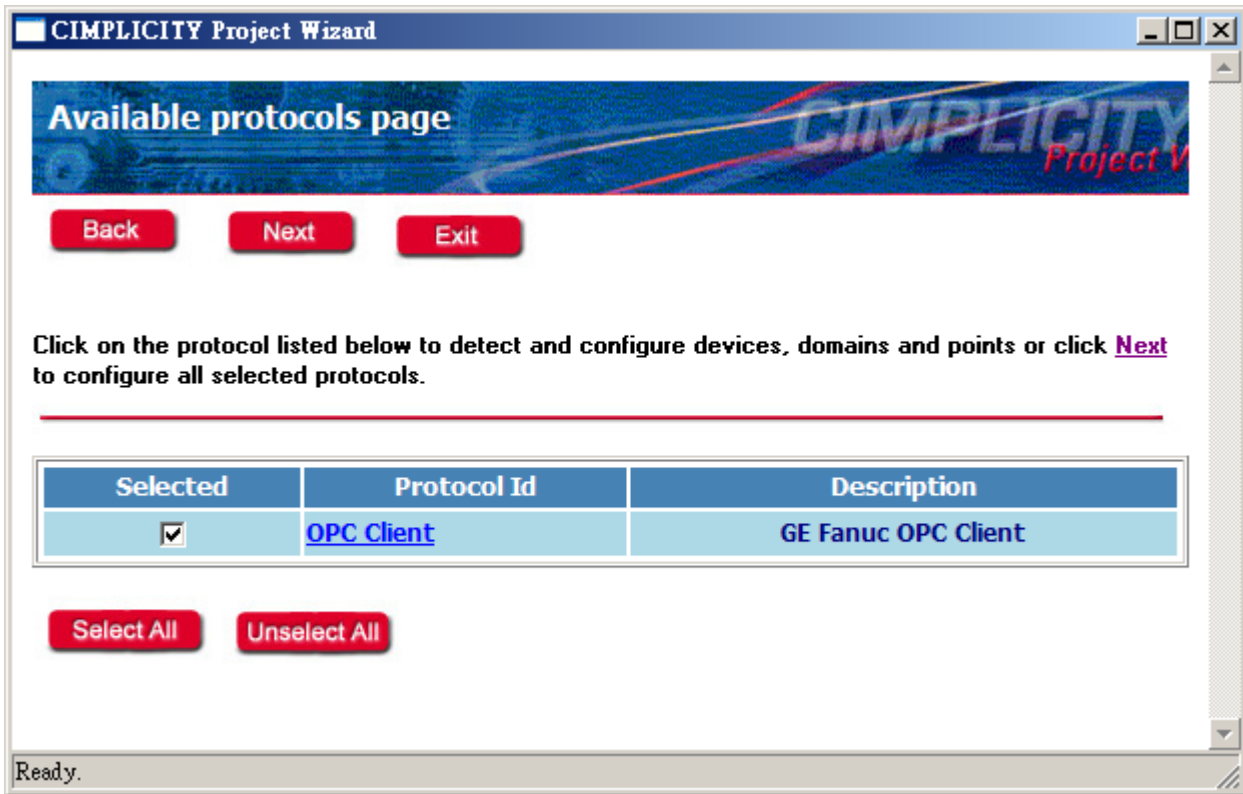
Please select “ OPC Client” as the protocol in the General page.



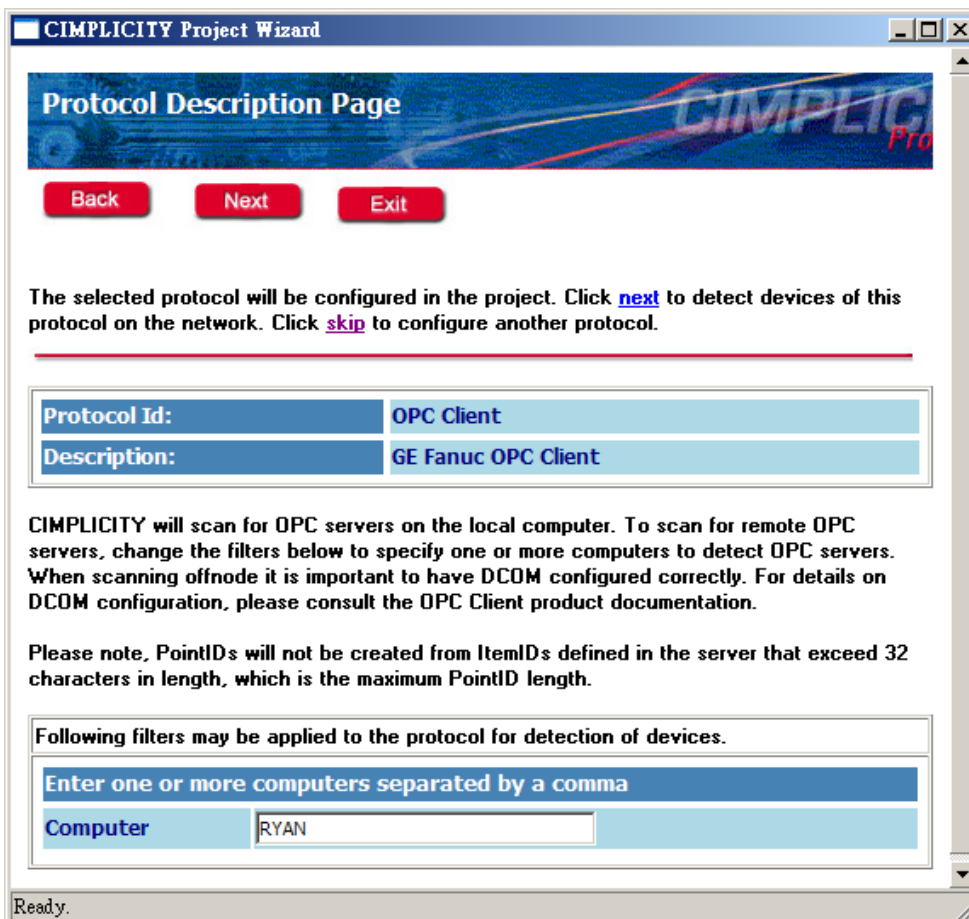
Please select [Next].



Please select "OPC Client" and then click [Next].



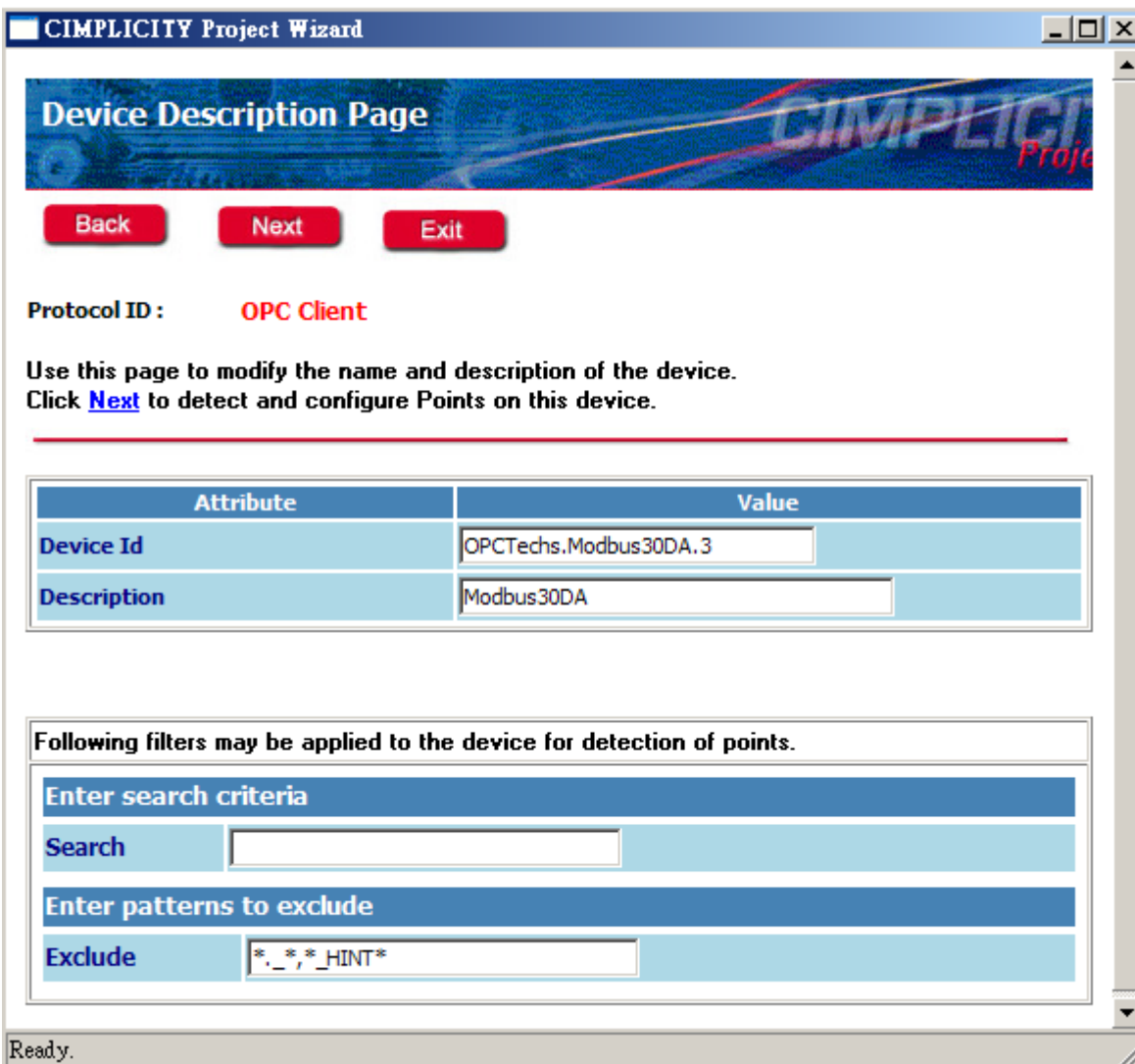
Write down the pc name or IP address where the OPC Server is saved inside.



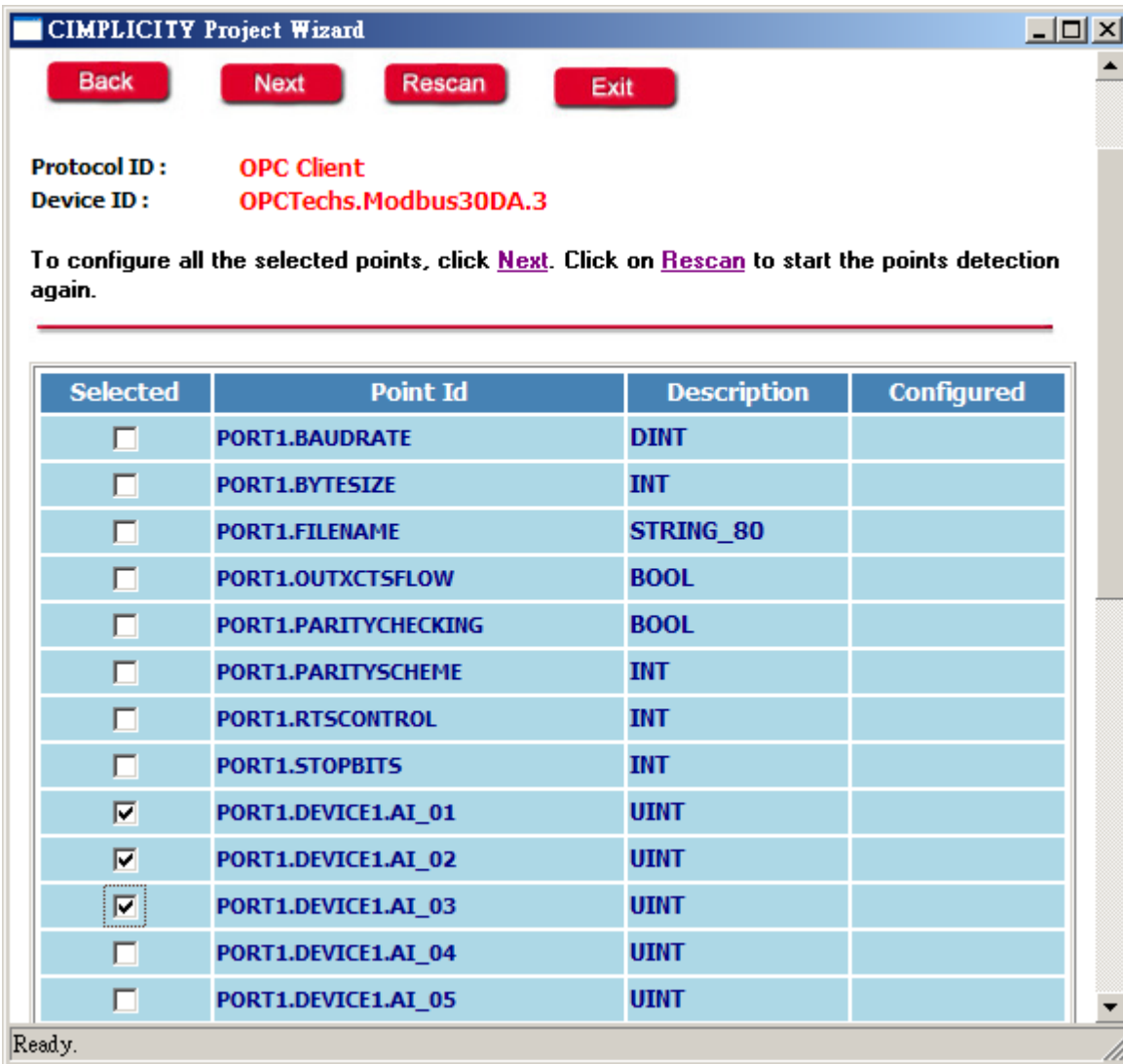
Select the OPC Server to be connected with.



Confirm all the items are defined correctly.



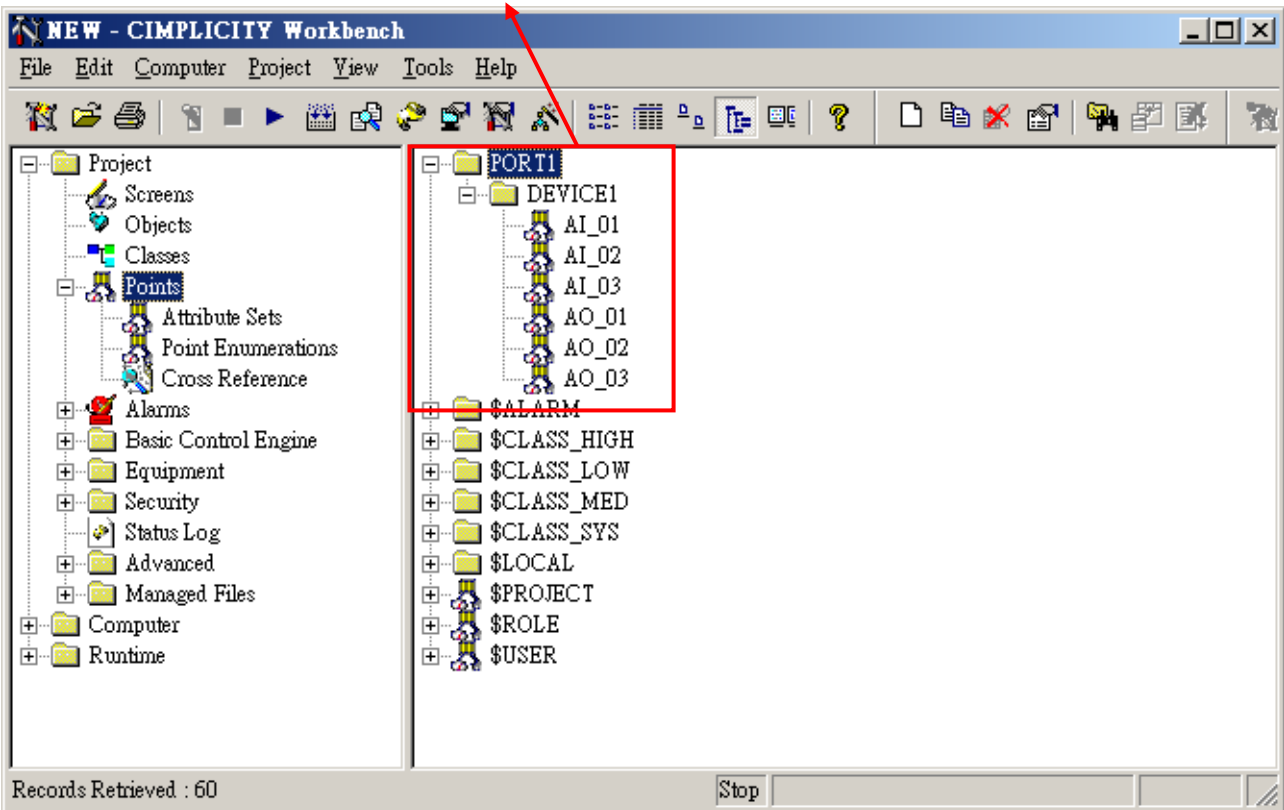
Please select the data items you need.



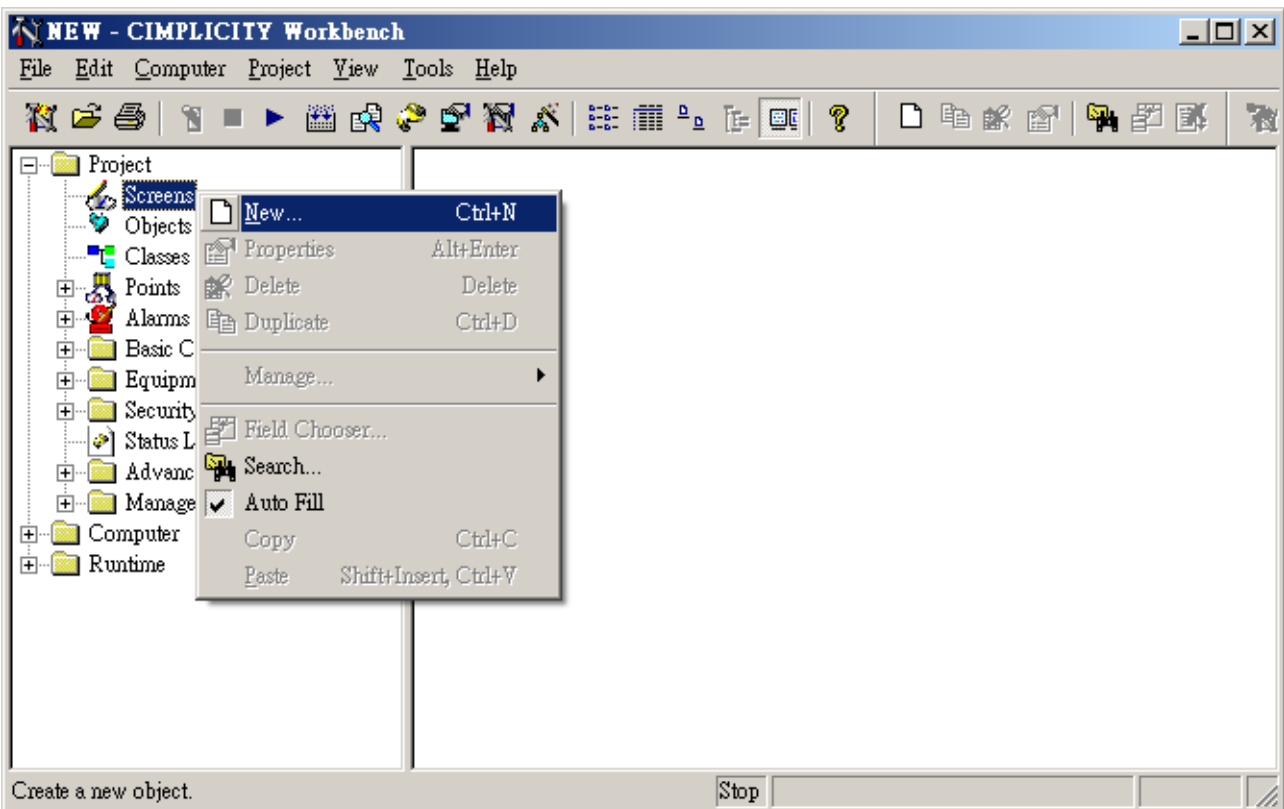
The setting process is finished now.



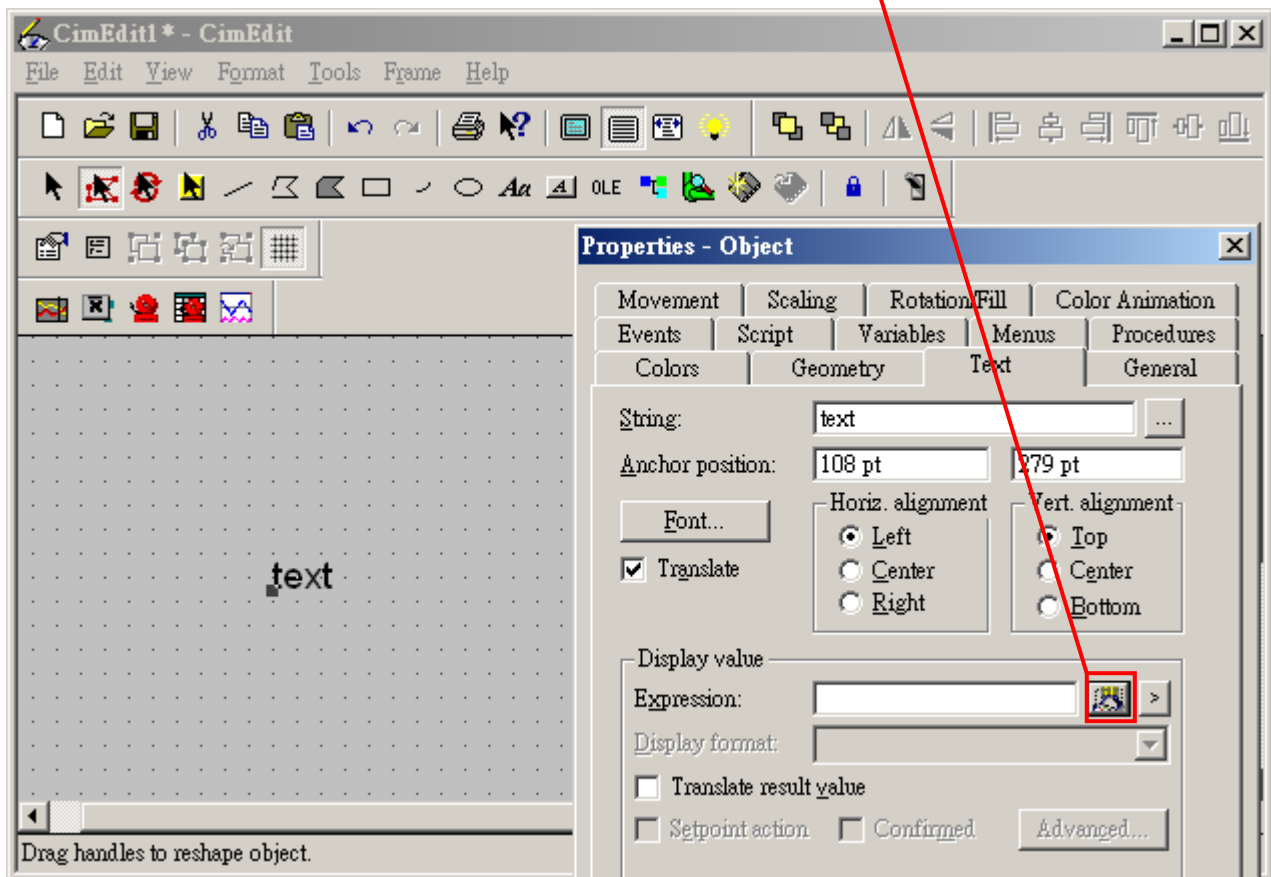
All the data items will be added here.



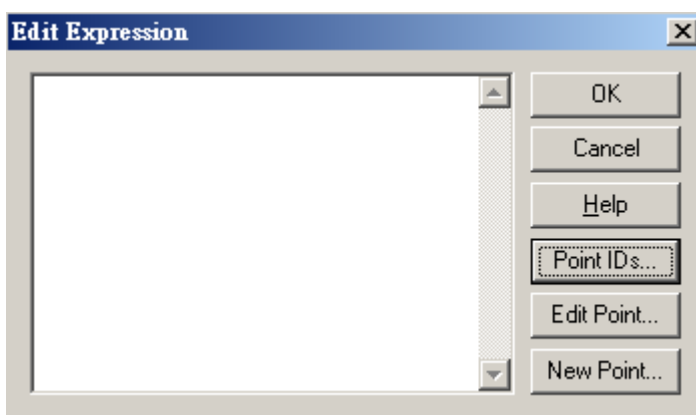
Press the right key on the [Screens] selecting "New".



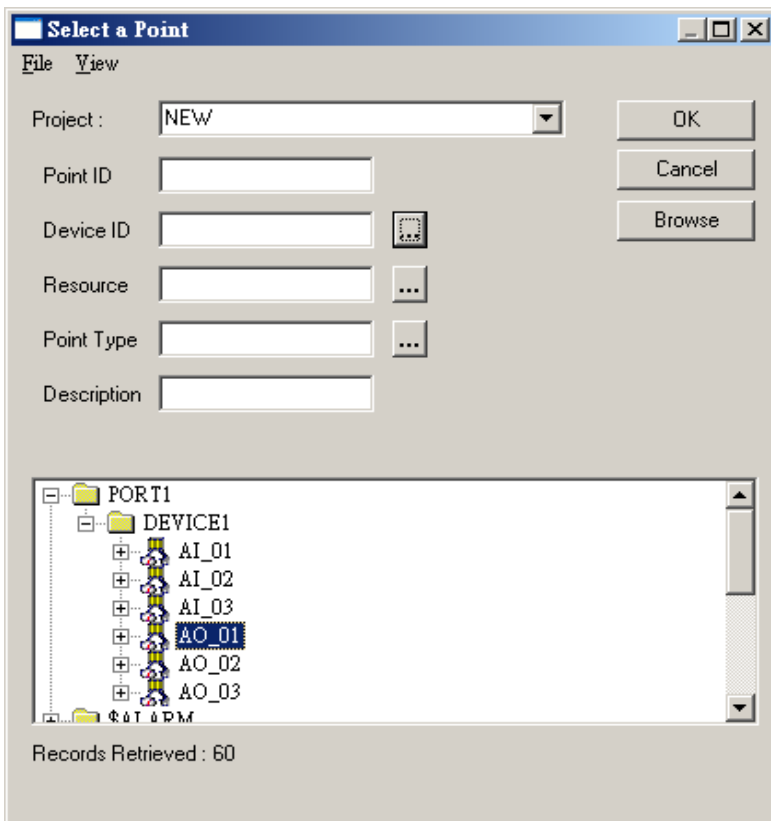
Create a new item and select  to connect it with the Tag you need.



Click [Point IDs...].



Select the Tag you need and then select [OK].



Execute [Project].

